

STORIES TO BE TOLD,
remembered, lived.
COLORFUL, RESONANT,
FRAGRANT.
STORIES OF *FLAVORS*
AND GESTURES,
ALWAYS THE SAME,
but always different.
STORIES THAT TAKE
PLACE IN THE KITCHEN.
KITCHEN STORIES.

Arclinea

KITCHEN STORIES

DESIGNED AND COORDINATED BY ANTONIO CITTERIO

Crocevia della casa, luogo pulsante e vitale, spazio di relazioni e connessioni, epicentro dei rituali domestici che si compiono e si ripetono, giorno dopo giorno. È così che Arclinea, da sempre, interpreta l'ambiente cucina, portando avanti un costante lavoro di ricerca teso al raggiungimento del punto di equilibrio tra esigenze funzionali ed estetico-formali. Un processo, per sua natura, in continuo divenire, che sa cogliere i cambiamenti in atto - anticipandoli a volte - e conciliare la praticità con la ricercatezza, l'innovazione delle forme con quella degli spazi. La cucina come territorio di sperimentazione complesso e avvincente, dove materiali e superfici dialogano con la dimensione tecnologica, in continua evoluzione. Scelte orientate a garantire la massima libertà progettuale, in modo che tutto ciò che è nuovo si integri a ciò che c'era prima. Un design industriale che, con radici ben salde in quella tradizione tutta italiana del saper combinare inventiva e conoscenza, traduce l'innovazione in un linguaggio che forma ogni volta ambienti unici, pronti per diventare nuove storie.

Nella visione di Arclinea, la cucina deve sempre più impiegare sistemi propri di altri ambienti e andare incontro a culture diverse e utilizzi vari. Deve sapere integrare funzioni nuove e raccogliere le sfide della tecnologia. Ogni nuovo prodotto nasce per diventare parte di un tutto: la Collezione Arclinea come sistema di componenti compatibili e trasversali, che permette di configurare liberamente gli spazi da abitare e di rispondere alle necessità di un utilizzo quotidiano, creativo, condiviso.

The heart of the home, a space full of life, a place for building relationships and forming connections: the kitchen is the epicenter of the domestic rituals we carry out faithfully every day. This is how Arclinea has always interpreted the kitchen, committed to reaching the perfect equilibrium between practical needs and aesthetic elegance. A journey of constant evolution, of adapting to new developments - even anticipating them at times - and harmonizing practicality and refinement, innovating forms and spaces as one. The kitchen as a complex and engaging territory for experimentation, where materials and surfaces encounter technological dimensions in a perpetual state of transformation. Choices aimed at guaranteeing the utmost design freedom, so that all that is new integrates itself with what was already there. An industrial design that, with solid roots in the Italian tradition of combining resourcefulness and expertise, translates innovation into a language that creates unique spaces, ready to welcome new stories.

Arclinea believes that the kitchen should increasingly adopt systems from other environments, embracing different cultures and uses. It must be able to incorporate new functions and step up to the challenges of technology. Each new product is made to become part of a whole: the Arclinea Collection takes shape as a system of compatible and transversal components, allowing free configuration of living spaces and responding to the needs of a creative, shared day-to-day living.

Arclinea

Show and Share
LIGNUM ET LAPIS
FRAME SYSTEM

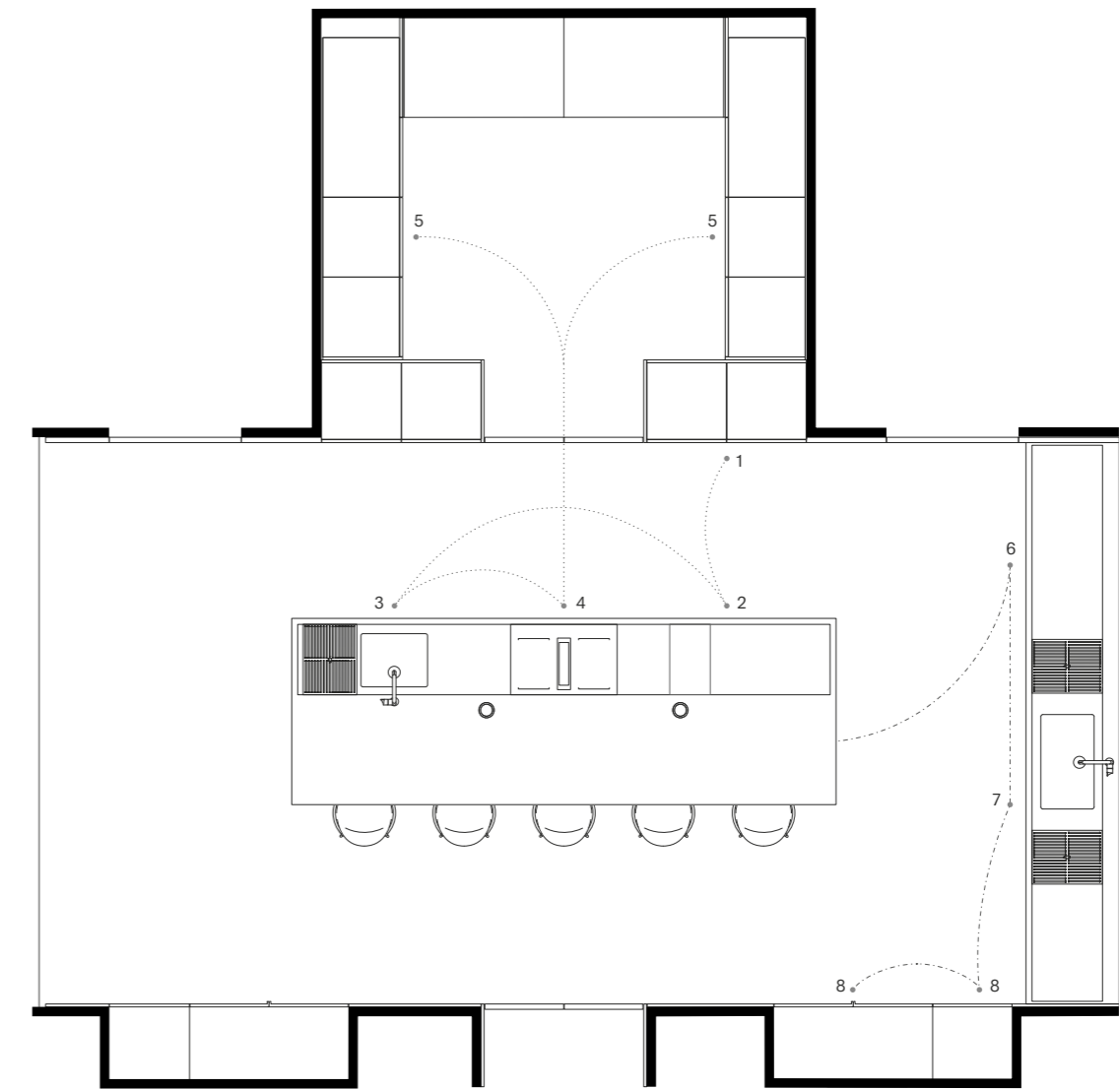












1. Frigo 2. Preparazione 3. Lavello 4. Fuochi 5. Forno 6. Rifiuti 7. Lavastoviglie 8. Contenitori
 1. Fridge 2. Food preparation 3. Sink 4. Cooktop 5. Oven 6. Waste bin 7. Dishwasher 8. Tall units
 - - - - Ciclo lavaggio / Washing cycle
 - - - - Ciclo preparazione / Food preparation cycle

Isola Lignum et Lapis (l 409 x p 140 x h 94 cm), ante Convivium Elegant acciaio inox Vintage, top in marmo Grigio Versilys opaco h 12 cm con invaso 1,2 cm, lavello, piano cottura a induzione con sistema di aspirazione integrato, griglie in PaperStone® e tagliere in noce scorrevoli; poggiatesta in legno rovere naturale e acciaio inox. **Lato lavaggio** (l 422 x p 70 x h 94 cm) ante basi Convivium Elegant acciaio inox Vintage, top acciaio inox Vintage h 3,1 cm, lavello, griglie in PaperStone®. **Mensolinea** (l 300 x p 13 x h 14,1 cm) alluminio finitura inox con luce LED 3000K integrata, accessori scorrevoli rovere naturale NTF. **Contenitori boiserie** e doppia porta bifacciale **Frame System** ante a listelli rovere naturale NTF verticale, maniglia **New Pocket** acciaio inox Vintage. **Contenitori anta vetro** Stopsol, interno rovere naturale NTF, cornice alluminio brushed bronze.

Dispensa. Lato preparazione (l 242,4 x p 75 x h 94 cm), ante basi Fenix NTM® efeso, top h 8 cm con invaso 1,2 cm e schienale attrezzato in marmo Grigio Versilys opaco con profilo acciaio inox Vintage e accessori scorrevoli in legno rovere naturale NTF. Mensole in legno rovere naturale NTF spessore 4 cm con profilo luce LED integrata 3000 K. **Parete contenitori** (l 257 x p 60 x h 299 cm), ante Fenix NTM® efeso con forni e frigorifero/freezer.

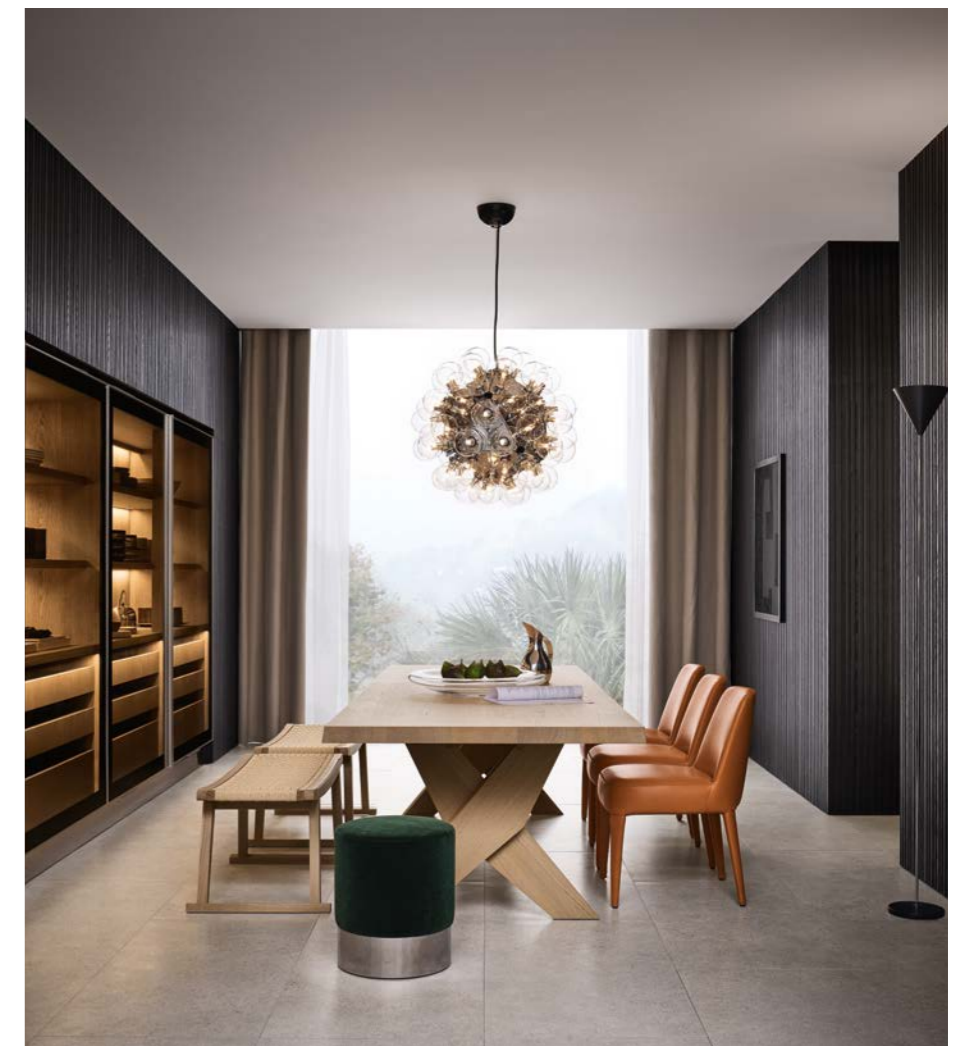
Lignum et Lapis island (w 409 x d 140 x h 94 cm), Convivium Elegant doors in Vintage stainless steel, 12 cm thick worktop in matte Grigio Versilys marble with 1.2 cm recess, sink, induction hob with integrated extractor, sliding PaperStone® grids and walnut chopping board; footrest in natural oak and stainless steel. **Washing side** (w 422 x d 70 x h 94 cm) Convivium Elegant base unit doors in Vintage stainless steel, 3.1 cm thick stainless steel worktop, sink, PaperStone® grids. **Mensolinea Shelf** (w 300 x d 13 x h 14.1 cm) in stainless steel-finish aluminium, built-in LED 3000K lighting, sliding accessories in NTF natural oak. **Wall panelled tall units** and **Frame System** double two-sides door with staves doors and **New Pocket** handle in Vintage stainless steel. **Wall tall units** with Stopsol glass door, interior in NTF natural oak, frame in brushed bronze aluminium.

Pantry. Food prep side (w 242.4 x d 75 x h 94 cm), base unit doors in efeso Fenix NTM®, 8 cm thick with 1.2 cm recess worktop and accessorised back panel matte Grigio Versilys marble with Vintage stainless steel profile and sliding accessories in NTF natural oak. Shelves 4 cm thick NTF natural oak with built-in 3000K LED lighting profile. **Wall of tall units** (w 257 x d 60 x h 299 cm), doors in efeso Fenix NTM® with built-in fridges and ovens.

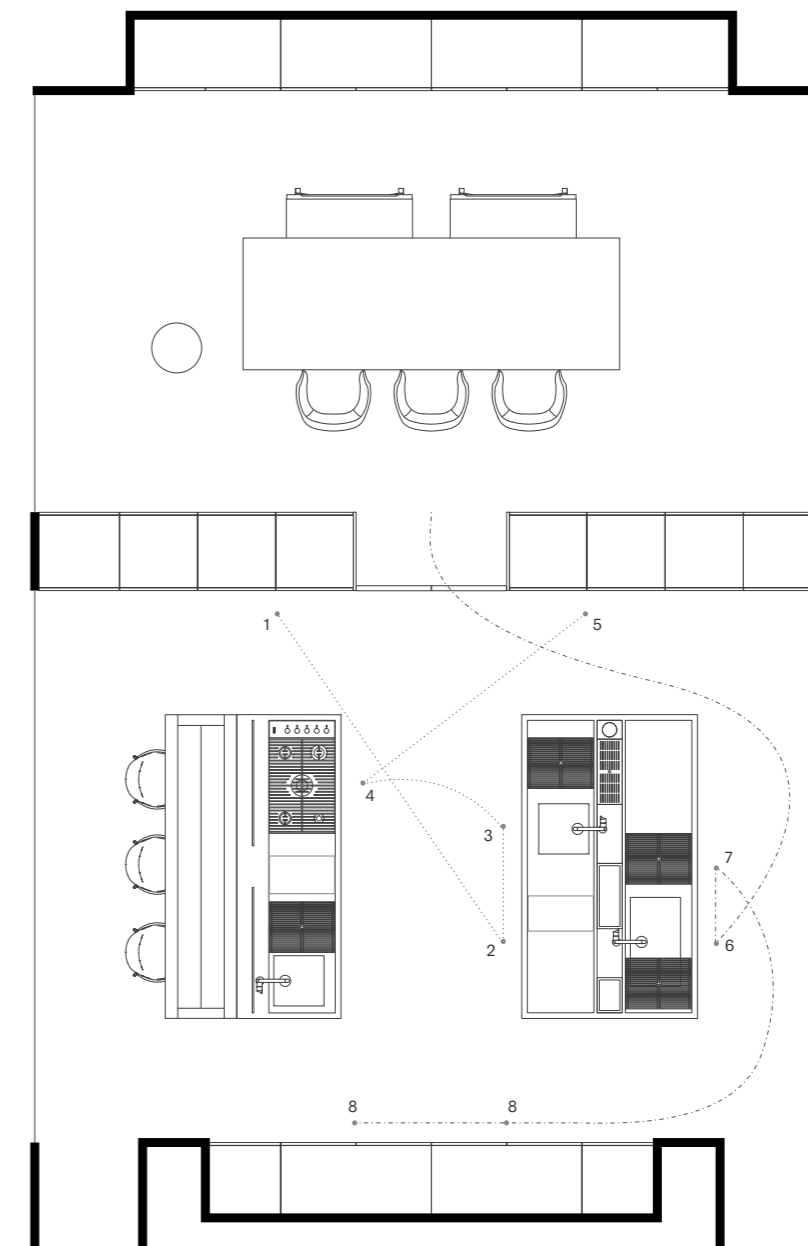
Professional Experience
ITALIA
LIGNUM ET LAPIS, FRAME SYSTEM











1. Frigo 2. Preparazione 3. Lavello 4. Fuochi 5. Forno 6. Rifiuti 7. Lavastoviglie 8. Contenitori
 1. Fridge 2. Food preparation 3. Sink 4. Cooktop 5. Oven 6. Waste bin 7. Dishwasher 8. Tall units
 - - - - Ciclo lavaggio / Washing cycle
 - - - - Ciclo preparazione / Food preparation cycle

Doppia isola Italia (l 242 x p 140 x h 90 cm), anta Italia acciaio inox Vintage, fusto grafite con accessori interni Moka Box rovere fumé; top marmo pietra Grey opaco h 8 cm con invaso 1,2 cm. **Isola cottura** con lavello, cottura Specialty 5 fuochi a gas, griglie PaperStone® e tagliere in legno scorrevoli, vetro paraspruzzi, snack Era e poggiatesta in fossil oak NTF, mensola singola in acciaio inox Vintage con cappa e LED 3000K, integrati. **Isola preparazione** con canale attrezzato centrale, doppio lavaggio, griglie in PaperStone® e tagliere in legno, scorrevoli, doppia mensola acciaio inox Vintage luce LED 3000, integrata. **Contenitori boiserie** anta **Lignum et Lapis**, maniglia Artusi dark silver e doppia porta bifacciale **Frame System**, maniglia Modus finitura bronzo, in frassino nero NTF. Ambiente cucina: cantina refrigerata **Vina** complanare 240 cm a doppia temperatura. Zona pranzo: **Madia** complanare 240 cm.

Double Italia island (w 242 x d 140 x h 90 cm), with Italia door in Vintage stainless steel, carcass in graphite with Moka Box internal accessories in fumé oak; worktop in 8 cm thick unpolished pietra Grey marble with 1.2 cm drip guard. **Cooking island** with sink, Specialty hob with 5 gas burners, sliding grids in PaperStone® and wooden chopping board, glass splash guard, Era snack bar and footrest in NTF fossil oak, single shelf in Vintage stainless steel with hood and built-in 3000K LED lighting. **Prep island** with central accessorised channel, double sink, sliding grids in PaperStone® and wooden chopping board, double shelf in Vintage stainless steel with built-in 3000K LED lighting. Wood **panelled tall units** with **Lignum et Lapis** door, Artusi handle in dark silver and **Frame System** double two-sided door, Modus handle in bronze finish, in NTF black ash. Kitchen area: coplanar 240 cm **Vina** refrigerated wine unit with dual temperature. Dining area: 240 cm coplanar **Madia**.

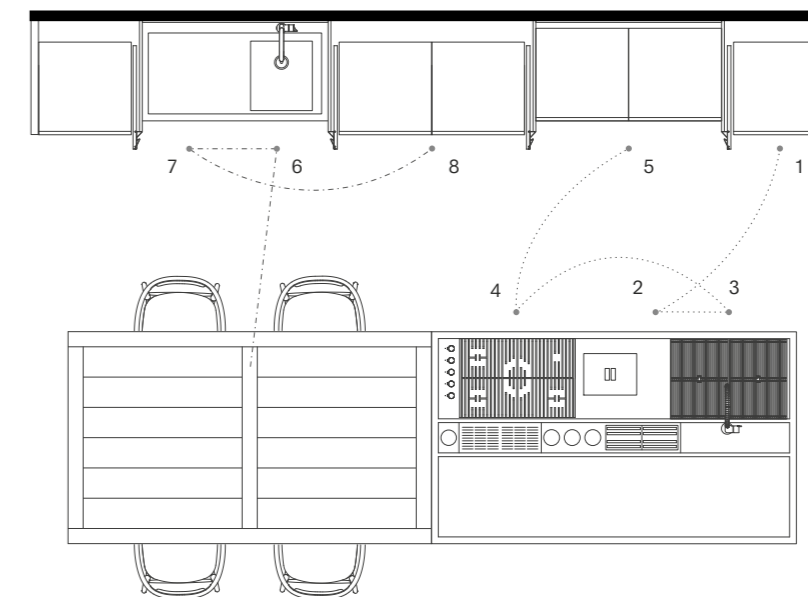
Everyday Living
CONVIVIUM
NEW POCKET SYSTEM, ERA SYSTEM











1. Frigo 2. Preparazione 3. Lavello 4. Fuochi 5. Forno 6. Rifiuti 7. Lavastoviglie 8. Contenitori
 1. Fridge 2. Food preparation 3. Sink 4. Cooktop 5. Oven 6. Waste bin 7. Dishwasher 8. Tall units
 - - - - - Ciclo lavaggio / Washing cycle
 Ciclo preparazione / Food preparation cycle

Isola Convivium (l 242 x p 140 x h 90 cm), ante Convivium Elegant acciaio inox PVD bronzo, cassetti interni con sponde acciaio e frontale teak attrezzati con accessori Box Globe, top in marmo Calacatta oro h 20 cm con doppio invaso 1,2 cm, lavello, pattumiera da top, cottura 5 gas **Specialty** con griglie in ghisa, griglie in PaperStone® e tagliere in legno scorrevoli, **Canale Attezzato** centrale in acciaio inox. **Tavolo integrato Era** (l 240 x p 140 x h 74 cm) rovere fumé NTF, struttura e piano a doghe con bordi perimetrali in legno massello. **Cappa New Convivium** (l 240 x p 90 cm) in acciaio PVD bronzo con vetro perimetrale e luce LED 3000K. **Volume architettonico**: boiserie in rovere fumé NTF verticale a doghe. **New Pocket System** (l 120 x p 75 x h 232 cm) vano lavaggio luce interna con lavello, pattumiera estraibile, lavastoviglie integrata, schienale con mensole luce LED 3000K integrata, top in marmo Calacatta oro h 6 cm, schienali in marmo Calacatta oro, basi interne ante Convivium Elegant rovere fumé NTF verticale. **New Pocket System** (l 120 x p 75 x h 232 cm), vano cottura con forni, luce interna, basi interne ante Convivium Elegant rovere fumé NTF verticale.

Convivium island (w 242 x d 140 x h 90 cm), Convivium Elegant doors in bronze PVD steel, internal drawers with steel sides and teak front fitted with Box Globe accessories, 20 cm thick worktop in Calacatta gold marble with double 1.2 cm drip guard, sink, worktop waste bin, **Specialty** 5-burner gas hob with cast iron pan supports, sliding grids in PaperStone® and wooden chopping board, central **Accessorised Channel** in stainless steel. **Era built-in table** (w 240 x d 140 x h 74 cm) NTF fumé oak, structure and top in slats with solid wood edging. **New Convivium hood** (w 240 x d 90 cm) in bronze PVD steel, with glass border and 3000K LED lighting. Architectural volume: vertical wood panelling in NTF fumé oak slats. **New Pocket System** (w 120 x d 75 x h 232 cm) washing area with lighting and sink, pull-out waste bin, built-in dishwasher, back panel with shelves and built-in 3000K LED lighting, 6 cm thick worktop in Calacatta gold marble, back panels in Calacatta gold marble, internal base units with Convivium Elegant doors in vertical NTF fumé oak. **New Pocket System** (w 120 x d 75 x h 232 cm) cooking area with ovens, internal lighting, internal base units with Convivium Elegant doors in vertical NTF fumé oak.

Handle-Free Elegance
THEA
TABLE WITH BENCH

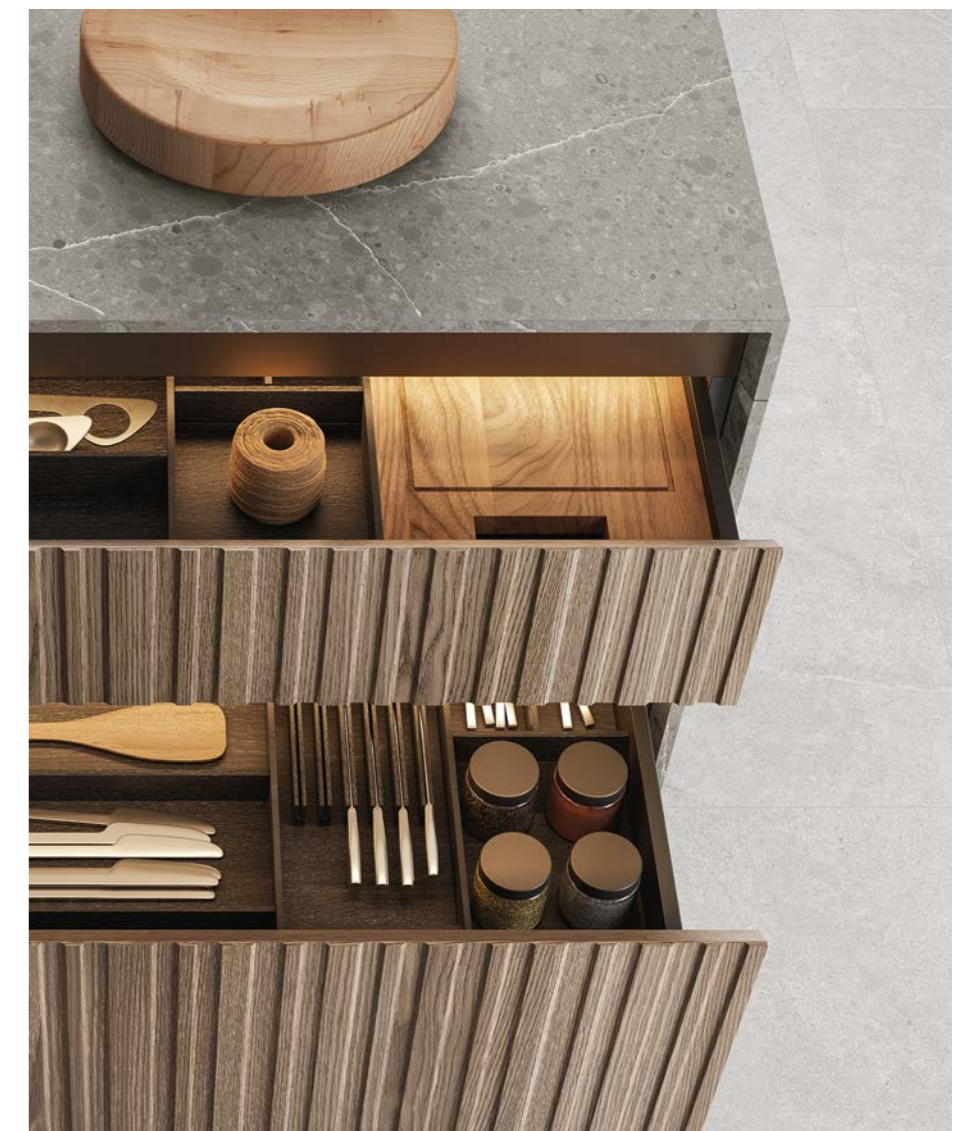




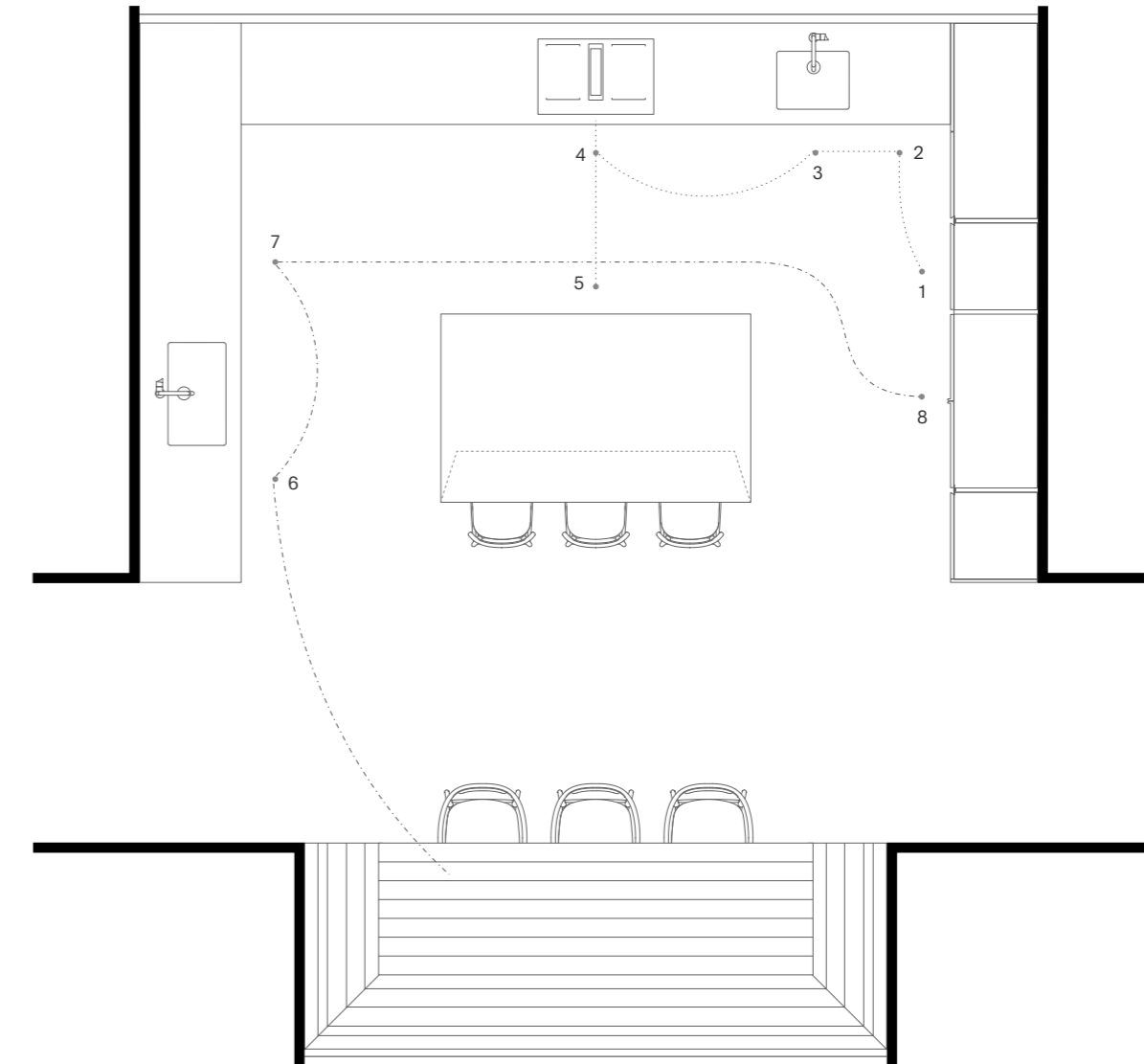


STORIES
OF A *VIBRANT*,
METICULOUSLY
organized
ENVIRONMENT.
A PLACE OF
PREPARATION,
EXPLORATION,

CURIOSITY,
AND
CONVIVIALITY.
A CROSSROADS
of emotions
AND CREATIVITY.
A SPACE
FOR *SHARING*.







1. Frigo 2. Preparazione 3. Lavello 4. Fuochi 5. Forno 6. Rifiuti 7. Lavastoviglie 8. Contenitori
 1. Fridge 2. Food preparation 3. Sink 4. Cooktop 5. Oven 6. Waste bin 7. Dishwasher 8. Tall units
 - - - - Ciclo lavaggio / Washing cycle
 - - - - Ciclo preparazione / Food preparation cycle

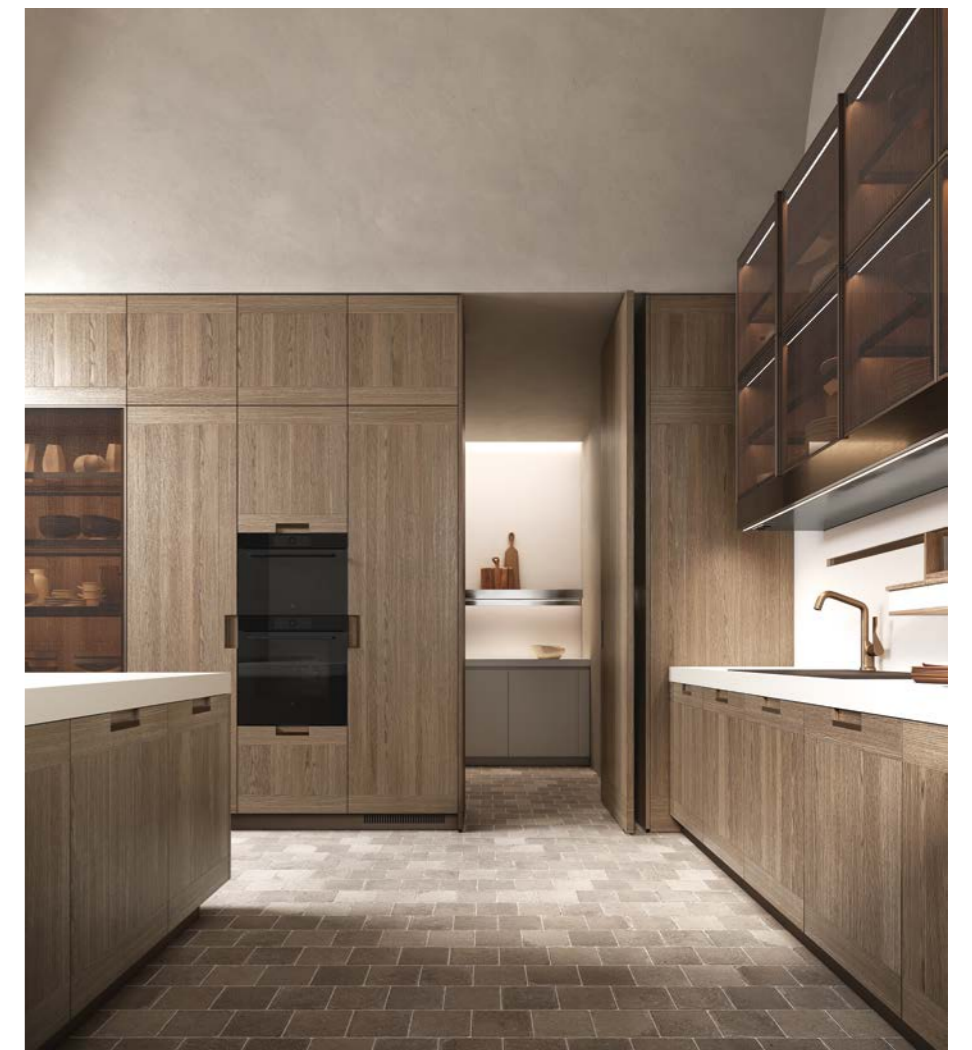
Isola Thea (l 274 x p 130 x h 94 cm), anta a listelli legno fossil oak NTF verticale, profilo Gola e zoccolo alluminio brushed bronze, **piano Waterfall** rastremato su tre lati in quarzo Mercury opaco h 2 cm, **snack Canto** in acciaio inox PVD bronzo con luce LED 3000K integrata. **Lato preparazione** (l 377 x p 70 x h 94 cm), **lato cottura** (l 560 x p 70 x h 94 cm), anta basi a listelli legno fossil oak NTF verticale, profilo Gola e zoccolo alluminio brushed bronze, piano Waterfall rastremato in quarzo Mercury opaco h 2 cm, schienale attrezzato quarzo Mercury opaco con profilo acciaio inox PVD bronzo e accessori scorrevoli in legno fossil oak NTF, piano cottura a induzione con sistema di aspirazione integrato, lavelli. **Parete contenitori** (l 386,2 x p 60 x h 266 cm), anta Fenix NTM® efeso, profilo Gola e zoccolo alluminio brushed bronze. **Contenitori anta vetro** Stopsol, cornice alluminio brushed bronze, interno legno fossil oak NTF. **Tavolo** (l 300 x p 78 x h 75 cm) con **panca in nicchia** (l 410 x p 132 x h 79,5 cm) in legno fossil oak NTF.

Thea island (w 274 x d 130 x h 94 cm), staves door in vertical NTF fossil oak, Gola profile and plinth in brushed bronze aluminium, **Waterfall worktop** tapered on three sides in 2 cm thick matte Mercury quartz, **Canto snack bar** in bronze PVD stainless steel with built-in LED 3000K lighting. **Food prep side** (w 377 x d 70 x h 94 cm), **cooking side** (w 560 x d 70 x h 94 cm), staves door in vertical NTF fossil oak, Gola profile and plinth in brushed bronze aluminium, **Waterfall worktop** tapered on sides in 2 cm thick matte Mercury quartz, accessorised back panel matte Mercury quartz with bronze PVD stainless steel profile and sliding accessories in NTF fossil oak, induction hob with integrated extractor, sinks. **Wall of tall units** (w 386.2 x d 60 x h 266 cm), doors in efeso Fenix NTM®, Gola profile and plinth in brushed bronze aluminium. **Wall tall units** with Stopsol glass door, frame in brushed bronze aluminium, interior in NTF fossil oak. **Table** (w 300 x d 78 x h 75 cm) with **slatted bench in niche** (w 410 x d 132 x h 79.5 cm) in NTF fossil oak.

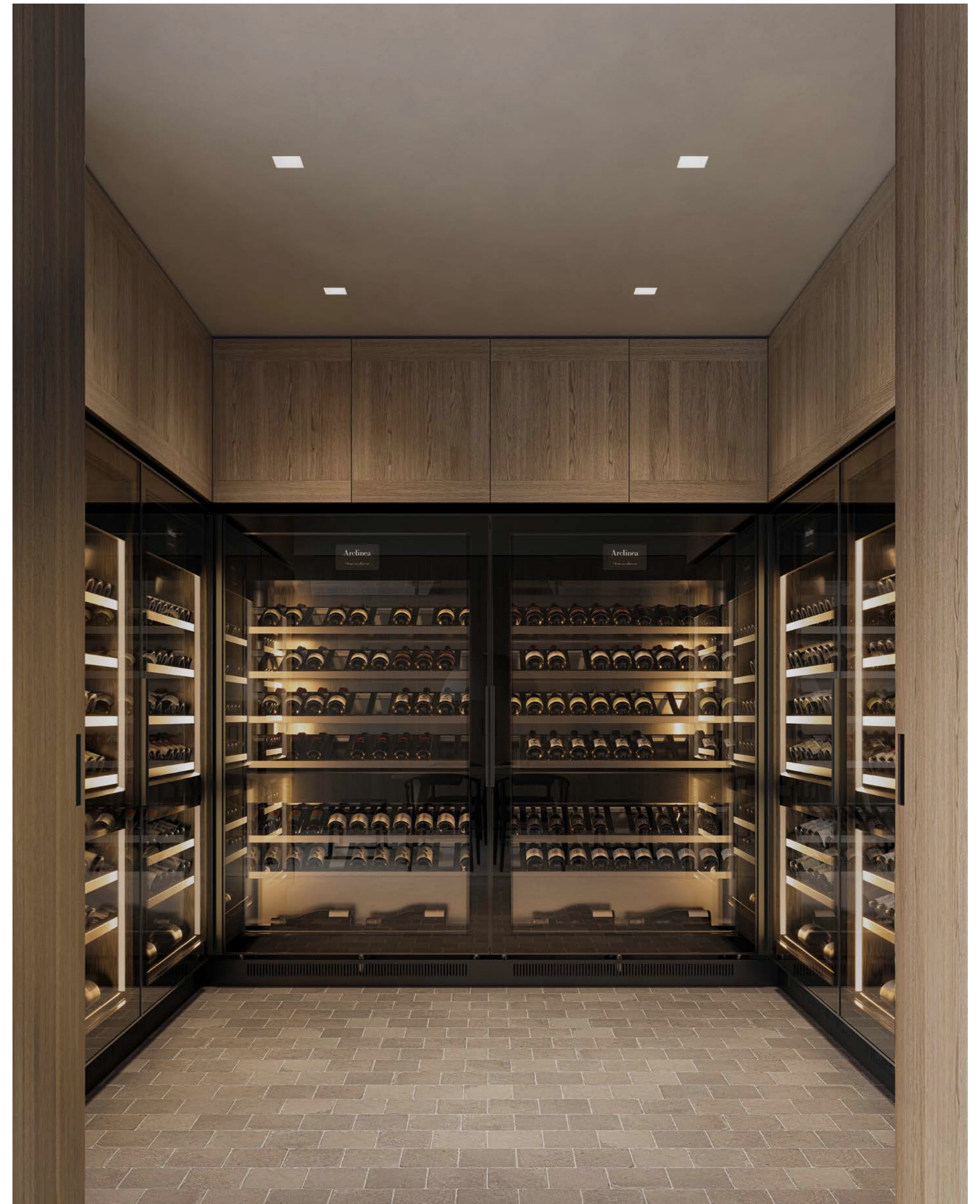
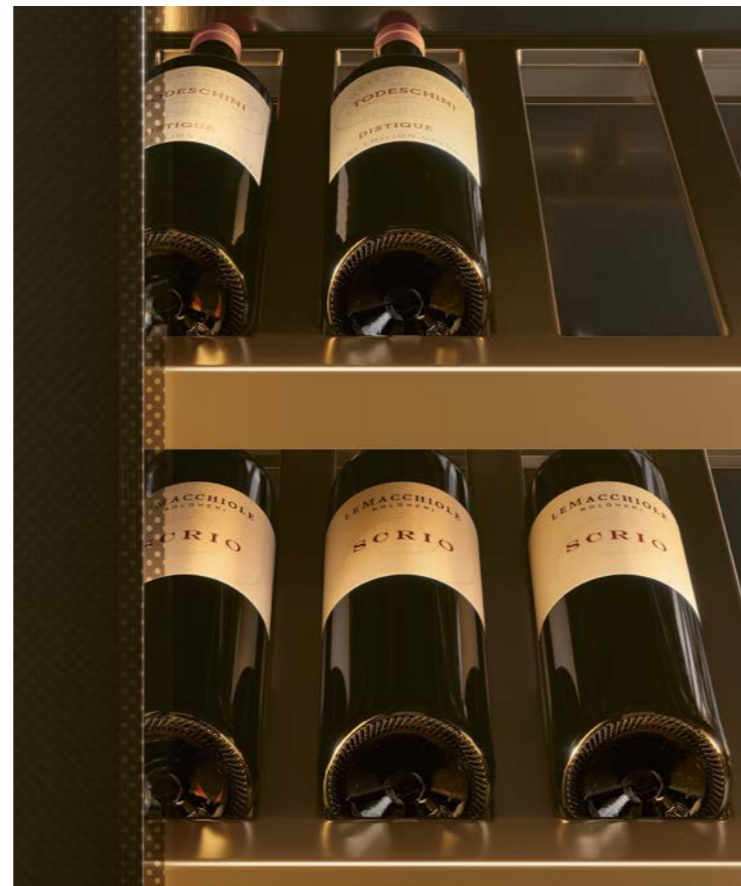
Welcoming Tradition
PRINCIPIA
FRAME SYSTEM, VINA

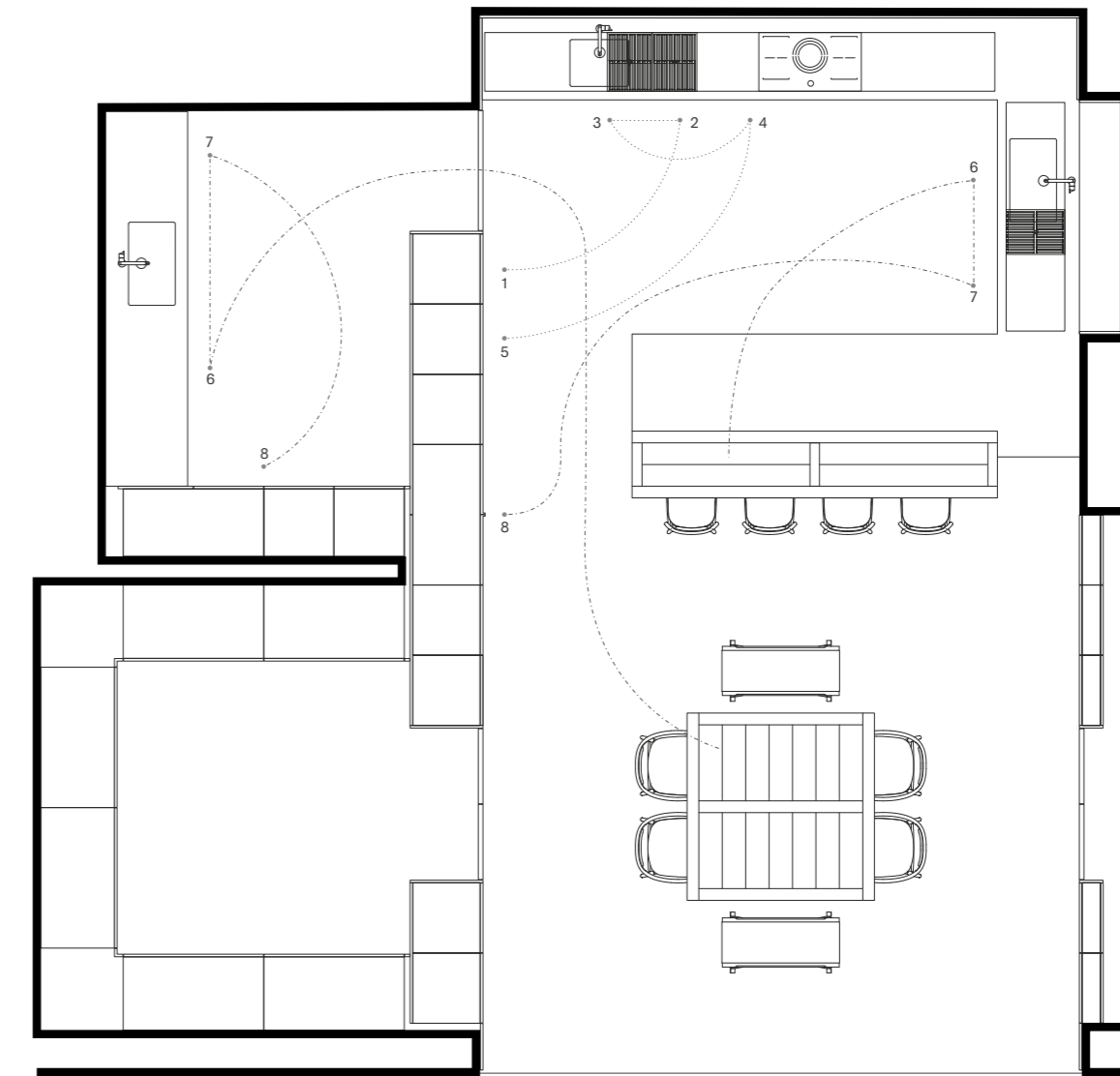












1. Frigo 2. Preparazione 3. Lavello 4. Fuochi 5. Forno 6. Rifiuti 7. Lavastoviglie 8. Contenitori
 1. Fridge 2. Food preparation 3. Sink 4. Cooktop 5. Oven 6. Waste bin 7. Dishwasher 8. Tall units
 - - - - Ciclo lavaggio / Washing cycle
 ----- Ciclo preparazione / Food preparation cycle

Principia. Lato cottura (l 502,2 x p 70 x h 90 cm), **lato lavaggio** (l 200 x p 70 x h 90 cm), **lato preparazione** (l 382,2 x p 105 x h 90 cm), anta Principia legno fossil oak NTF, maniglia Principia acciaio inox PVD bronzo, top quarzo Absolute White opaco h 8 cm con invaso h 1,2 cm, lavelli, piano cottura a induzione, griglie scorrevoli in PaperStone®, schienale attrezzato quarzo Absolute White con profilo appendi oggetti in acciaio inox PVD bronzo, accessori scorrevoli legno fossil oak NTF. **Mensola cappa** (l 420 x p 45 x h 14 cm) alluminio brushed bronze e luce LED 3000K integrata. **Pensili anta vetro** Trama Bronze, cornice alluminio brushed bronze, interno fossil oak NTF. **Snack Era** in appoggio (l 300 x p 57 x h 4 cm) legno fossil oak NTF a doghe con bordi perimetrali in legno massello. **Contenitori boiserie** (l 900 x p 60 x h 292 cm), porta singola (wet kitchen) e doppia porta (winery) **Frame System** anta legno fossil oak NTF, maniglia Principia acciaio inox PVD bronzo, zoccolo alluminio brushed bronze. **Contenitori anta vetro** Trama Bronze, cornice alluminio brushed bronze, interno fossil oak NTF.

Wet kitchen (l 320 x p 70 x h 90 cm), anta basi Convivium Elegant in Fenix NTM® nocciola, top h 8 cm e schienale quarzo Absolute White opaco, lavello. **Mensolinea** (l 320 x p 13 x h 14,1 cm) acciaio inox con luce LED 3000K integrata.

Cantina. Cantine refrigerate **Vina DT** (l 240 cm x p 60 x h 213 cm) a doppia temperatura. **Tavolo Era** (l 160 x p 160 x h 75 cm) in legno fossil oak dogato NTF, struttura e piano con bordi perimetrali in legno massello.

Principia. Cooking side (w 502.2 x d 70 x h 90 cm), **washing side** (w 200 x d 70 x h 90 cm), **food prep side** (w 382.2 x d 105 x h 90 cm), Principia door in NTF fossil oak, Principia handle in bronze PVD stainless steel, 8 cm thick with 1.2 cm recess worktop in matte Absolute White quartz, sinks, induction hob, sliding grids in PaperStone®, accessorised back panel matte Absolute White quartz with bronze PVD stainless steel profile, sliding accessories in NTF fossil oak. **Shelf hood** (w 420 x d 45 x h 14 cm) in brushed bronze aluminium with built-in 3000K LED lighting. **Wall units** with Trama Bronze glass door, frame in brushed bronze aluminium, interior in NTF fossil oak. **Era snack table resting on unit** (w 300 x d 57 x h 4 cm) in NTF fossil oak slats, solid wood edge. **Wall panelled tall units** (w 900 x d 60 x h 292 cm), **Frame System** single door (wet kitchen) and double two-sides door (winery) in NTF fossil oak, Principia handle in bronze PVD stainless steel, plinth in brushed bronze aluminium. **Wall tall units** with Trama Bronze glass door, frame in brushed bronze aluminium, interior in NTF fossil oak.

Wet kitchen (w 320 x d 70 x h 90 cm), Convivium Elegant base unit doors nocciola Fenix NTM®, 8 cm thick worktop and back panel in matte Absolute White quartz, sink. **Mensolinea shelf** (w 320 x d 13 x h 14.1 cm) in stainless steel with built-in 3000K LED lighting.

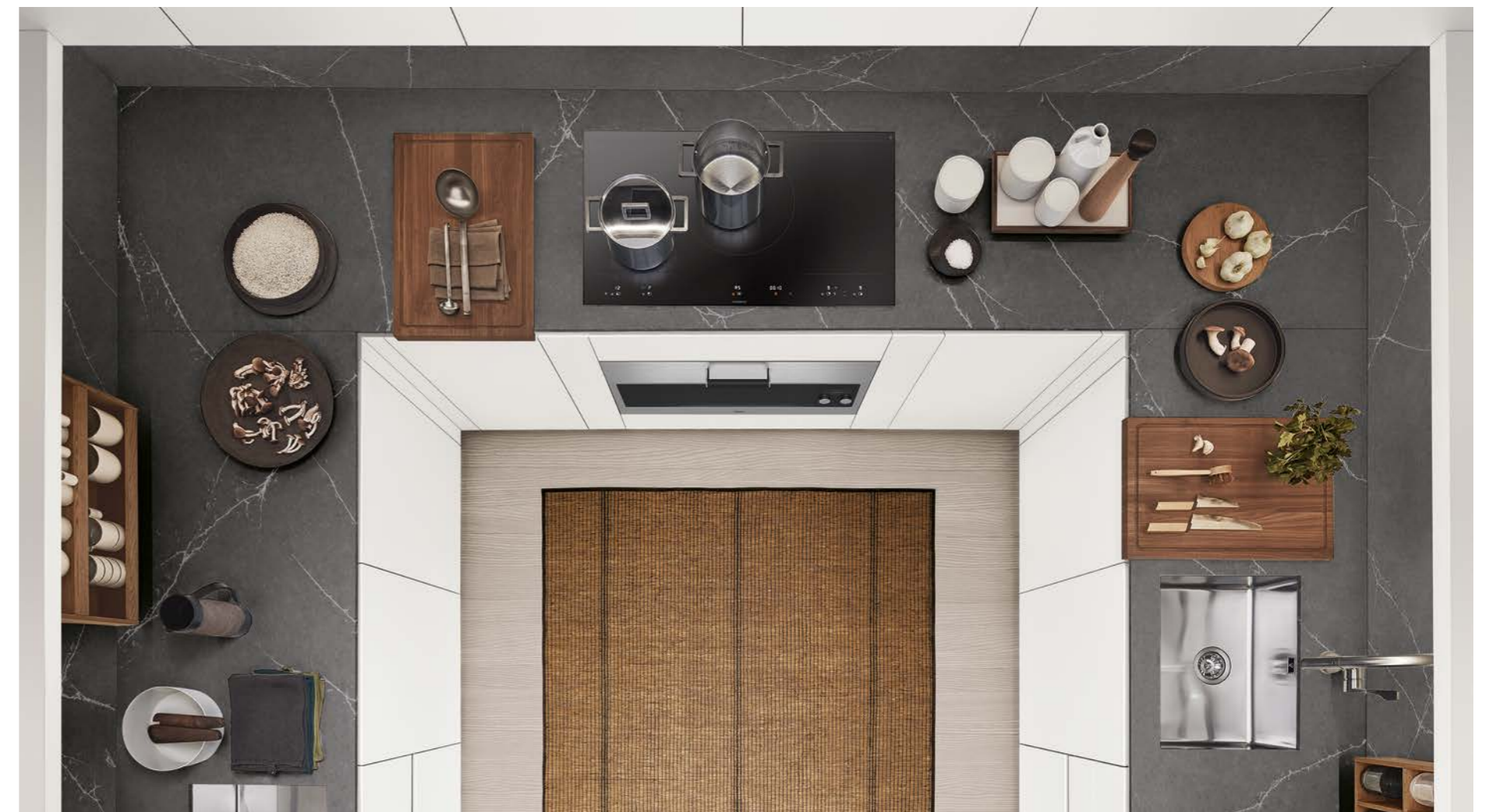
Winery. Vina DT (w 240 cm x d 60 x h 213 cm) refrigerated wine unit with dual temperature. **Era table** (w 160 x d 160 x h 75 cm) in NTF fossil oak slats, structure and top with solid wood perimeter edges.

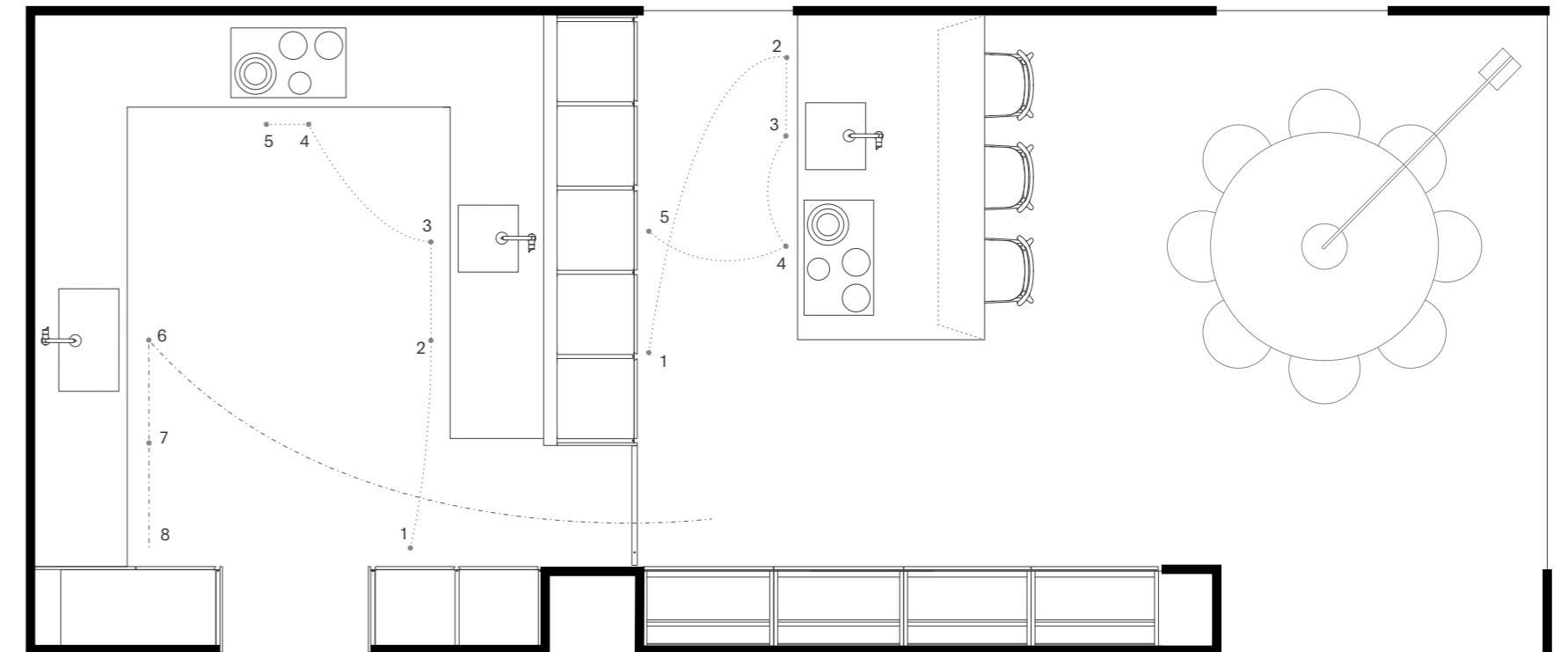
Handle-Free Elegance
THEA
FRAME SYSTEM











1. Frigo 2. Preparazione 3. Lavello 4. Fuochi 5. Forno 6. Rifiuti 7. Lavastoviglie 8. Contenitori
 1. Fridge 2. Food preparation 3. Sink 4. Cooktop 5. Oven 6. Waste bin 7. Dishwasher 8. Tall units
 - - - - - Ciclo lavaggio / Washing cycle
 - - - - - Ciclo preparazione / Food preparation cycle

Show kitchen. Isola Thea (l 304 x p 140 x h 94 cm), anta Fenix NTM® bianco, profilo Gola alluminio anodizzato nero, zoccolo acciaio inox PVD nero, **piano Waterfall** rastremato su tre lati in quarzo venato opaco h 2 cm, con bordo esterno frontale spessore 1,2 cm, **snack Canto** in acciaio inox PVD nero. **Parete contenitori** (l 460,2 x p 60 x h 230 cm), anta frassino nero NTF verticale, profilo Gola alluminio anodizzato nero, zoccolo acciaio inox PVD nero. **Frame System** (l 90 x p 4 x h 230 cm), porta passaggio frassino nero NTF verticale con maniglia New Pocket finitura acciaio. **Madia** (l 240 + 240 cm) sistema complanare, interni in legno fossil oak NTF, luce LED integrata 3000K.

Wet kitchen. Lato cottura (l 360 x p 70 x h 94 cm), **lato lavaggio** (l 390 x p 70 x h 94 cm), **lato preparazione** (l 300 x p 70 x h 94 cm), anta basi in nobilitato matt white, profilo Gola alluminio anodizzato nero, pensili anta sporgente in nobilitato matt white h 84 cm, profilo luce LED 3000K su sistema anta sporgente, zoccolo acciaio inox PVD nero, **piano Waterfall** rastremato in quarzo venato opaco h 2 cm, bordo esterno frontale spessore 1,2 cm, schienale attrezzato quarzo venato opaco con profilo acciaio inox completo di accessori scorrevoli in legno fossil oak. Mensole laminato matt white spessore 4 cm con profilo luce LED integrata 3000K. **Parete contenitori** (l 360 x p 60 x h 230 cm), anta frassino nero NTF verticale, profilo Gola alluminio anodizzato nero, zoccolo acciaio inox PVD nero.

Show kitchen. Thea island (w 304 x d 140 x h 94 cm), door in white Fenix NTM®, Gola profile in black anodised aluminium, plinth in black PVD stainless steel, **Waterfall worktop** tapered on three sides in 2 cm thick matte veined quartz with 1.2 cm thick external front edge, **Canto snack bar** in black PVD stainless steel. **Wall of tall units** (w 460.2 x d 60 x h 230 cm), door in vertical NTF black ash, Gola profile in black anodised aluminium, plinth in black PVD stainless steel. **Frame System** (w 90 x d 4 x h 230 cm), walk through door in vertical NTF black ash with New Pocket handle in steel finish. **Madia** (w 240 + 240 cm) coplanar system, interiors in NTF fossil oak, built-in 3000K LED light.

Wet kitchen. Cooking side (w 360 x d 70 x h 94 cm), **washing side** (w 390 x d 70 x h 94 cm), **food prep side** (w 300 x d 70 x h 94 cm), base unit doors in matt white melamine, Gola profile in black anodised aluminium, wall unit protruding doors in matt white melamine h 84 cm, 3000K LED lighting profile on protruding door system, plinth in black PVD stainless steel, structured **Waterfall worktop** tapered on sides in 2 cm thick matte veined quartz, 1.2 cm thick external front edge, accessories back panel matte veined quartz with stainless steel profile complete with sliding accessories in fossil oak. Shelves 4 cm thick matt white laminated shelves with built-in 3000K LED lighting profile. **Wall of tall units** (w 360 x d 60 x h 230 cm), door in vertical NTF black ash, Gola profile in black anodised aluminium, plinth in black PVD stainless steel.

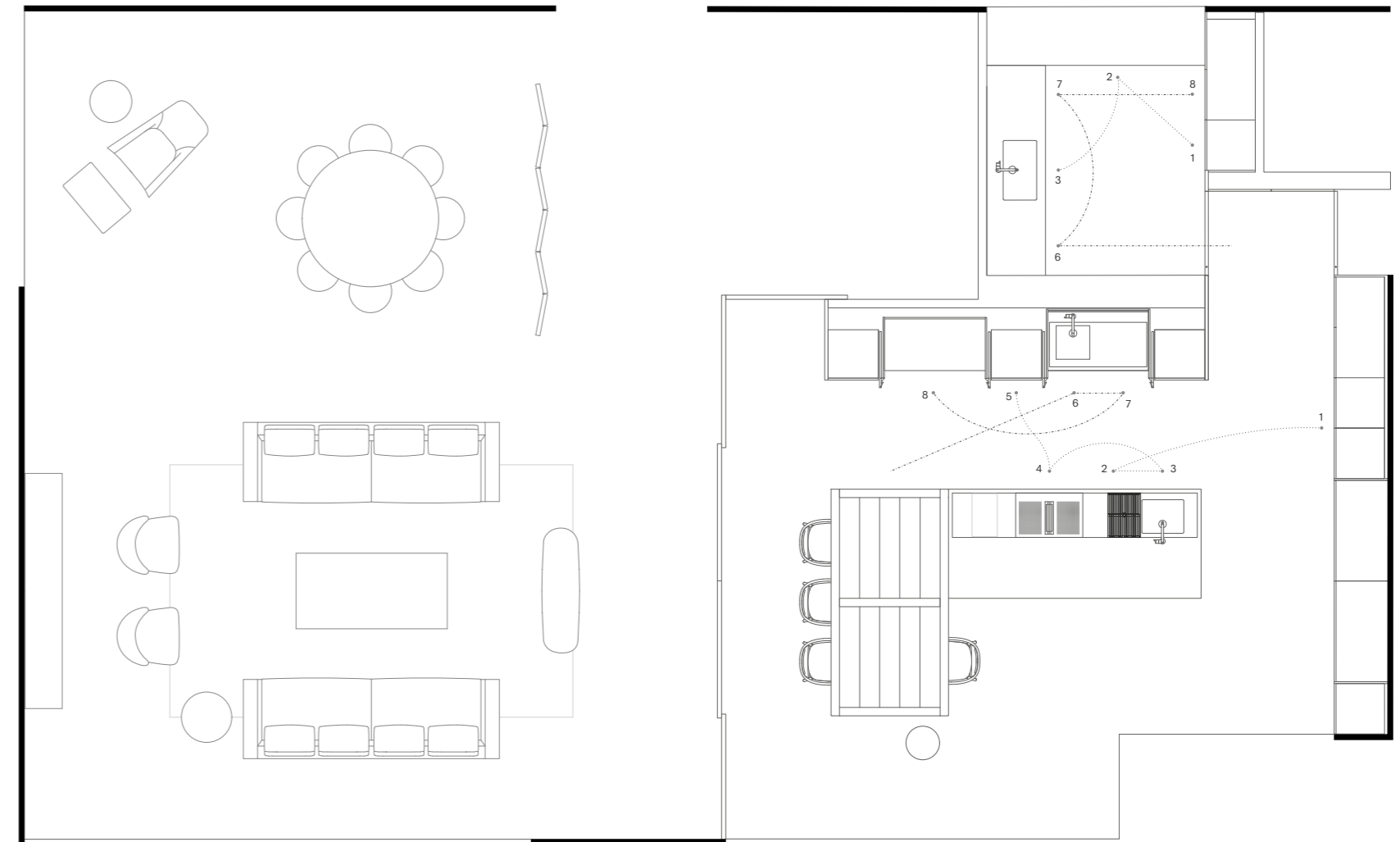
Everyday Living
CONVIVIUM
ERA SYSTEM, VINA, NEW POCKET SYSTEM











1. Frigo 2. Preparazione 3. Lavello 4. Fuochi 5. Forno 6. Rifiuti 7. Lavastoviglie 8. Contenitori
 1. Frigo 2. Food preparation 3. Sink 4. Cooktop 5. Oven 6. Waste bin 7. Dishwasher 8. Tall units
 - - - - - Ciclo lavaggio / Washing cycle
 - - - - - Ciclo preparazione / Food preparation cycle

Isola Convivium (l 362 x p 130 x h 90 cm), anta Convivium Elegant acciaio inox PVD nero, cassetti interni con accessori Moka Box System, top marmo Noir Saint Laurent nero lucido h 20 cm con doppio invaso 1,2 cm, lavello, piano cottura a induzione con sistema di aspirazione integrato, griglie in PaperStone® e tagliere in noce scorrevoli. **Tavolo integrato Era Up&Down** (l 280 x p 130 x h 75 cm), rovere grigio dogato NTF, struttura e piano con bordi perimetrali in legno massello. **Mensola singola** (l 238 x p 60 x h 7,6 cm), in acciaio inox PVD nero con luce LED integrata 3000K. **New Pocket System** (l 134,6 x p 75 x h 213 cm), vano credenza, anta rovere grigio NTF verticale, maniglia New Pocket acciaio inox PVD nero. Vano lavaggio, anta basi Convivium Elegant acciaio inox PVD nero, top h 8 cm e schienale con invaso 1,2 cm marmo Noir Saint Laurent nero lucido, lavello. **Contenitori boiserie** (l 540 x p 60 x h 299 cm), anta Convivium New Professional rovere grigio NTF verticale, maniglia acciaio inox PVD nero, Cantina refrigerata **Vina DT** (l 240 cm x p 60 x h 213 cm) a doppia temperatura. **Wet Kitchen. Lato lavaggio** (l 310 x p 70 x h 206 cm), **lato preparazione** (l 260 x p 70 x h 94 cm), anta basi Convivium New Professional Fenix NTM® nocciola, maniglia acciaio inox PVD nero, top h 2 cm, schienale quarzo Guarrigue opaco, lavello. Pensili a giorno in rovere grigio NTF, **Mensolinea** acciaio anodizzato nero con luce LED 3000K integrata, accessori in filo finitura nero opaco, zoccolo acciaio inox PVD nero. **Parete contenitori** (l 180 x p 60 x h 299 cm), anta Convivium New Professional rovere grigio NTF verticale, maniglia acciaio inox PVD nero, zoccolo rovere grigio NTF, porta singola **Frame System** in rovere grigio verticale NTF, maniglia New Pocket in acciaio inox PVD nero.

Convivium island (w 362 x d 130 x h 90 cm), Convivium Elegant door in black PVD stainless steel, deep drawers with internal drawers with Moka Box System accessories, 20 cm thick worktop in polished black Saint Laurent marble with 1.2 cm recess, sink, induction hob with integrated extractor, sliding PaperStone® grids and walnut chopping board. **Up&Down Era built-in table** (w 280 x d 130 x h 75 cm), NTF grey oak slats, structure and top in slats with solid wood edging. **Single shelf** (w 238 x d 60 x h 7.6 cm), black PVD stainless steel with built-in 3000K LED lighting profile. **New Pocket System** (w 134.6 x d 75 x h 213 cm), pantry version, vertical NTF grey oak door, black PVD stainless steel New Pocket handle. Washing version, Convivium Elegant door in black PVD stainless steel, 8 cm thick worktop in polished black Saint Laurent marble with 1.2 cm recess, sink.

Wall panelled tall units (w 540 x d 60 x h 299 cm), Convivium New Professional base unit doors in vertical NTF grey oak door, handle in black PVD stainless steel, **Vina DT** (w 240 cm x d 60 x h 213 cm) refrigerated wine unit with dual temperature.

Wet Kitchen. Washing side (w 310 x d 70 x h 206 cm), **food prep side** (w 260 x d 70 x h 90 cm), Convivium New Professional base unit doors in nocciola Fenix NTM®, handle in black PVD stainless steel, back panel matte Garrigue quartz, sink. Open wall units in NTF grey oak, **Mensolinea shelf** in black anodised aluminium with built-in 3000K LED lighting profile, matte black finish wire accessories, plinth in black PVD stainless steel. **Wall units** (w 180 x d 60 x h 299 cm), Convivium New Professional base unit doors in vertical NTF grey oak, handle in black PVD stainless steel, plinth in NTF grey oak, **Frame System** door in vertical NTF grey oak, New Pocket handle in black PVD stainless steel.

Art direction and graphic design: Juma

p. 2-13, 34-59, 70-79
Image rendering: Suprema Unlimited Reality
Styling: Gaia Marchesini and Giordano Sarno

p. 14-33, 60-69
Photography: Federico Cedrone
Styling: simonasilenzi Studio with Alessandra Chiarelli, Gaia Marchesini, Giordano Sarno
Postproduction: Studio Dilux

Texts: Roberta Lissidini

Prepress: Altra Luce
Printing: Grafiche Antiga
Translations: StudioCentro Personale e Traduzioni S.r.l.

Special thanks to:
Azucena
B&B Italia
Flos
Louis Poulsen
Maxalto
Rimadesio

April 2024

Arclinea può apportare ai prodotti modifiche, migliorie tecniche, annullamenti di articoli di fine serie che siano ritenuti opportuni, in qualsiasi momento e senza alcun preavviso. Arclinea reserves the right to modify its products, apply technical improvements or cancel end-of-series articles when deemed opportune and at any time, without prior notice.

All the projects, designs, schemes, layouts and models of our production are covered and protected by copyright. Arclinea Arredamenti S.p.A.

