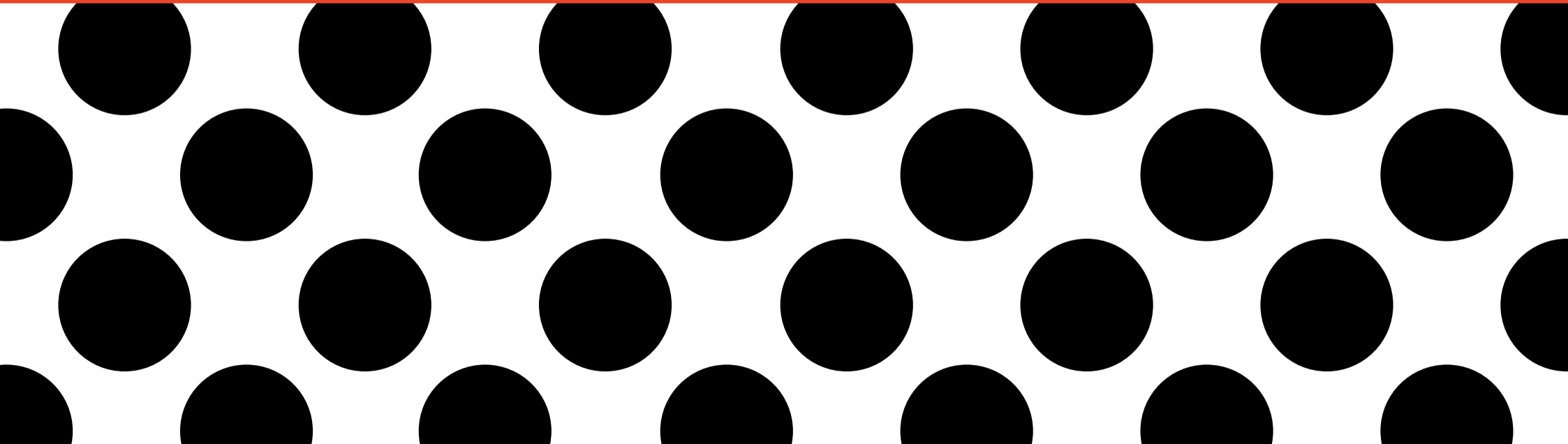


-Solids B&B Italia 2023

B&B
ITALIA



“We wanted to respect B&B Italia’s creative DNA and its multiple languages, a tribute to its ability to keep paradoxes under control. B&B Italia is recognised for great classics

but at the same time has always been able to surprise. This year we wanted to be as surprising as possible.”
Piero Lissoni,
Artistic Director
at B&B Italia.

Dambo

Sofa System

Piero Lissoni

“Dambo is a modular system that suggests a new way of sitting, a system of large islands. I imagined it as an island amid the ebb and flow of everyday life. The beautiful thing is its presence, it can create unexpected places but at the same time much more classical, less casual places.”

Dambo is a modular system composed of irregular pentagons and rectangular modules that combines more complex geometric shapes with linear elements and lends itself to multiple compositions and environments. The different geometries are in harmony with each other, informal yet functional and versatile.





Dambo

Sofa System

Piero Lissoni

There are five basic elements, characterised by softness and plush ergonomics. The pentagonal base elements, with their large dimensions and great flexibility, can be used as peninsulas when combined with other elements or as free-standing monoliths. They are cosy volumes to be placed in

the middle of a room, to craft corner solutions or to create customized compositions. The polygonal modules have also been designed with a chaise longue in mind, true evolutions of the peninsula module and organic forms devoted to total relaxation.



Dambo

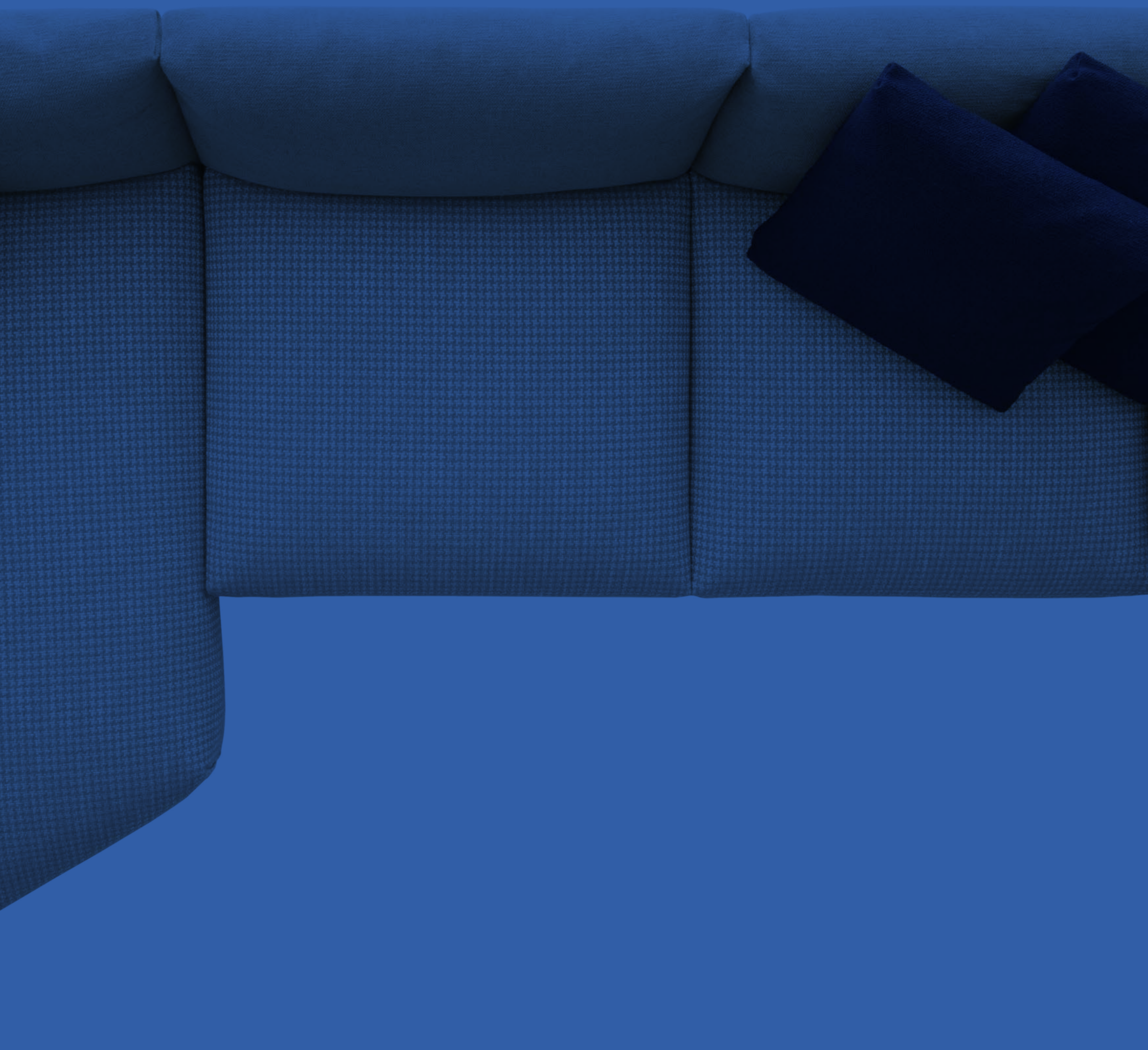
Sofa System

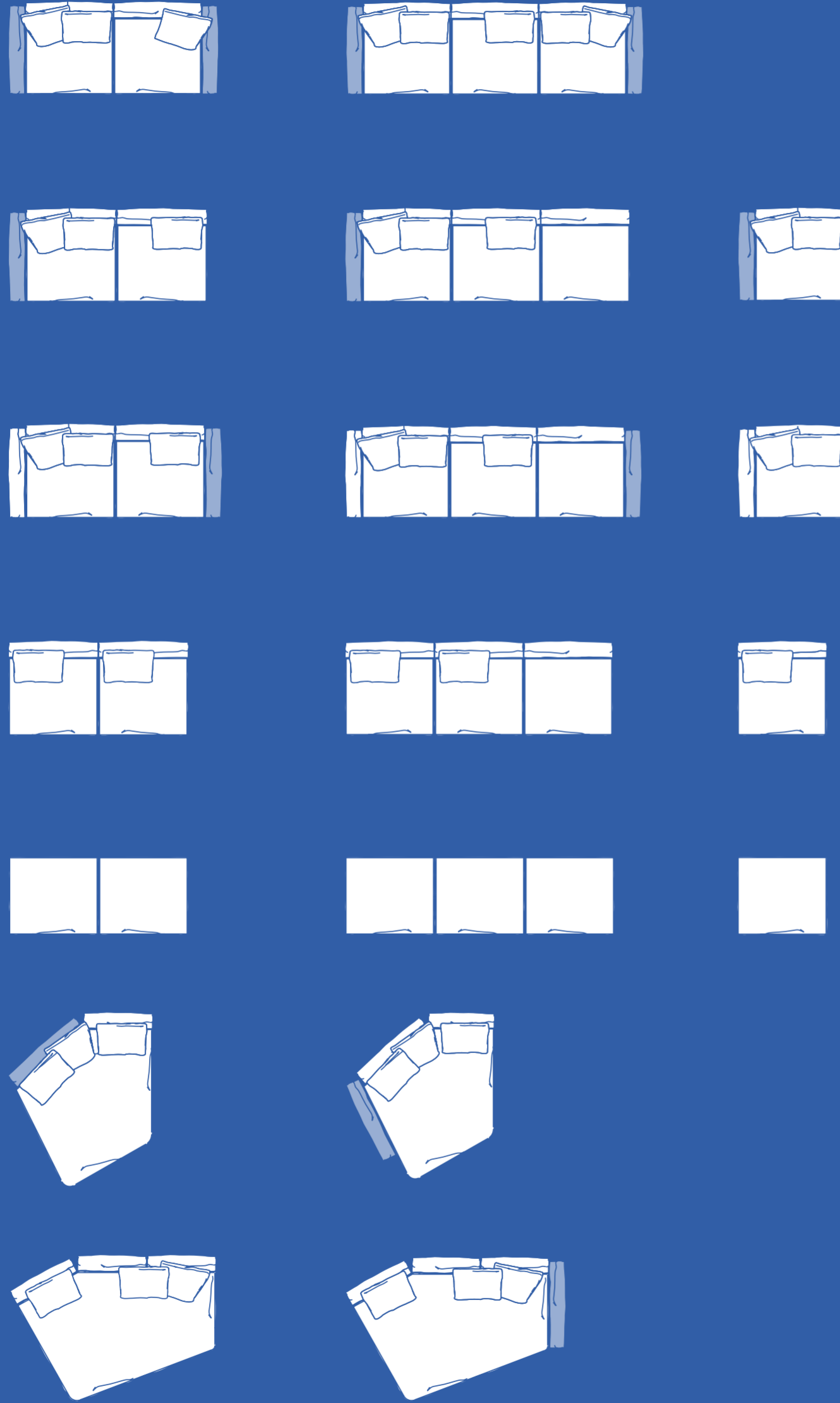
Piero Lissoni



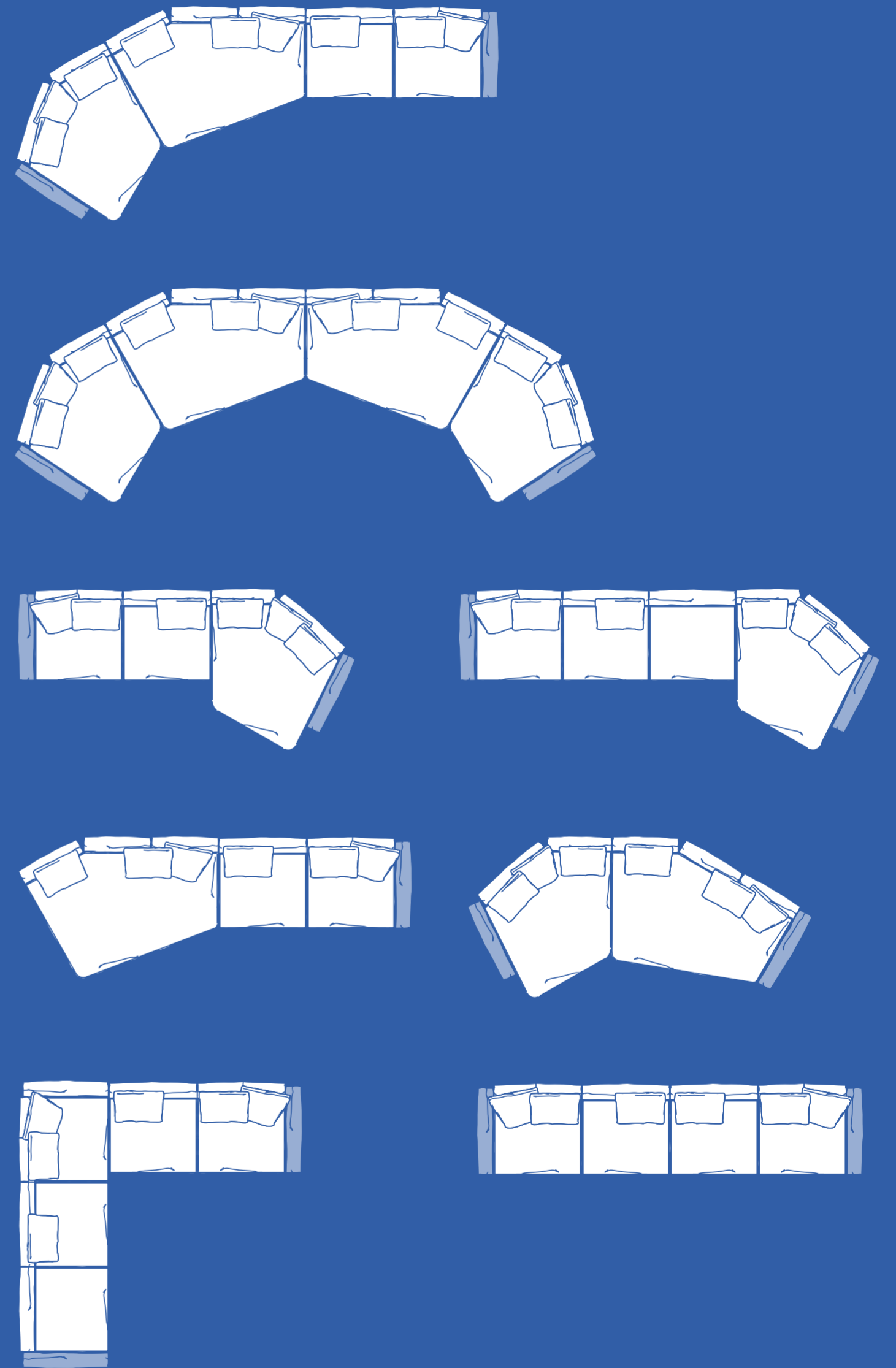
The high, enveloping backrests are a hymn to the organic forms of the botanical world. The armrests resemble petals thanks to a front movement that allows them to be lowered and adjusted as desired. What emerges is lightness but also versatility, in line with

the contemporary lifestyle dictates increasingly merging living spaces and home office corners. Dambo thus lends itself to a wide audience, faithful to the B&B Italia tradition, but with an eye on the art of modern living.





Elements available in right and left version.



Suggestion of compositions.

Eryt Armchair

Piero Lissoni

“Eryt is a project I have wanted to do for many years with B&B Italia. I think it has a good expressiveness; at its core there is an idea of simplicity and respect for qualities that are very humanised, and wood is exploited to maximise its possibilities”.

With a strong graphic and welcoming presence, Eryt's light or black brushed ash structure recalls Nordic rigour and an oriental spirit through a linear combination of materials but with refined touches.

The armchair is available entirely in wood or with the seat covered in thick leather and can be complemented with a soft elliptical cushion upholstered in fabric or leather.



Tortello

Sofa

Edward Barber and Jay Osgerby

“Sculptural in form, the Tortello sofa and armchair are generous in proportion and extremely soft, giving ultimate comfort. The informal shape offers different seating positions and makes Tortello a centrepiece.”

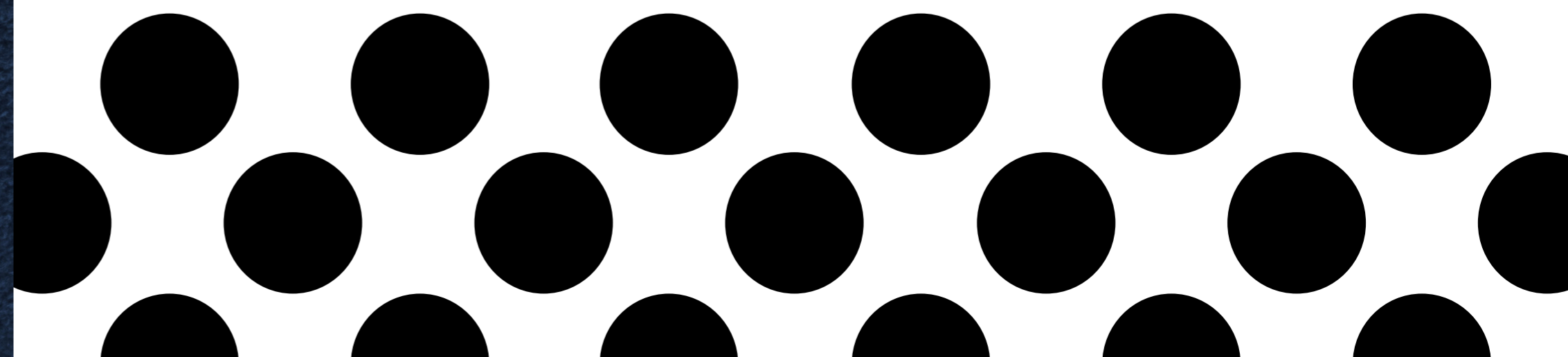
The new Tortello seat presents itself as a monolithic sofa that amuses with its generous, soft and cosy shapes. The supporting structure, a sort of tray with a trapezoidal section base, is rotationally moulded from recycled polyethylene. It is then completed by an elastomer mattress on which the foamed upper element is laid, a soft fabric-covered volume characterised by a peculiar profile thanks to a ‘pinched’ stitching.



Circularity and recycling are at the heart of the Tortello collection, starting with the structure in second-life polyethylene to which are added elements in polyurethane foam and thermoplastic elastomers that define its geometry and comfort. The various elements can be completely disassembled and consequently easy to recycle.

Tortello Armchair

Edward Barber and Jay Osgerby



Lemante

Small tables

Kensaku Oshiro

“Geometry is a source of creativity. With a simple gesture it opens up a world of infinite possibilities. Lemante was born this way, in a simple way, from two squares.”

Lemante is a collection of small tables which refers to organic forms found in nature juxtaposed with the more essential lines of the structure. It is based on a simple geometric idea: two parallel squares rotated and offset by 45°. The collection comprises four interlocking sizes for infinite decorative compositions.



Alys 10 Bed

Gabriele and Oscar Buratti

“The idea of Alys 10 is to have a base that is more prominent and more present within space, a bed frame with a soft, rounded shape, covered in thick leather. The characteristic headboard, a leather sheet that, ‘pinched’ at the base, takes on its natural curved shape, is now enriched by the colour contrast of the stitching.”

On the occasion of its 10th Anniversary, Alys bed is envisioned with a more prominent base and soft shapes while maintaining the iconic headboard, made up of a sheet of leather ‘pinched’ at the base. Alys 10 also sees the introduction of a refined shade of milk white thick leather with contrasting stitching.

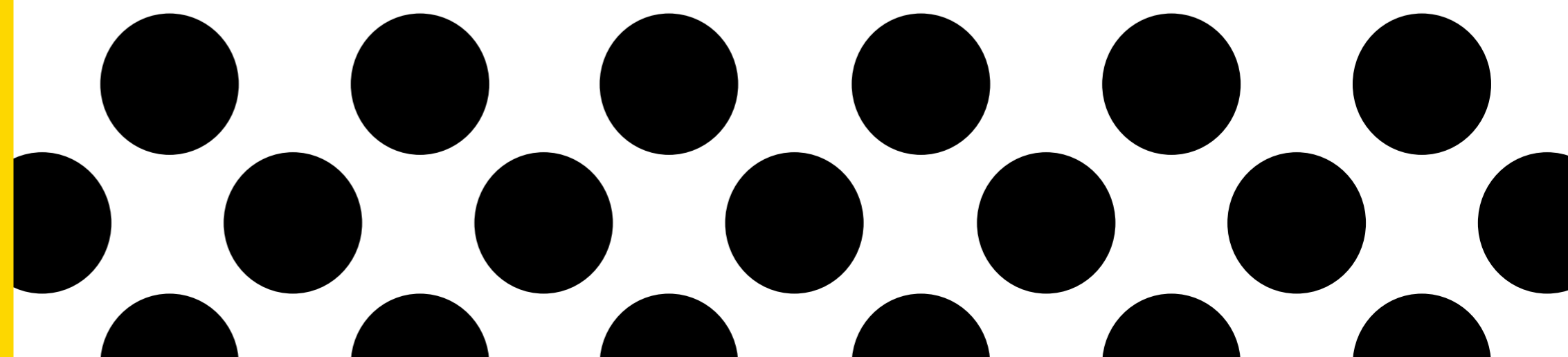


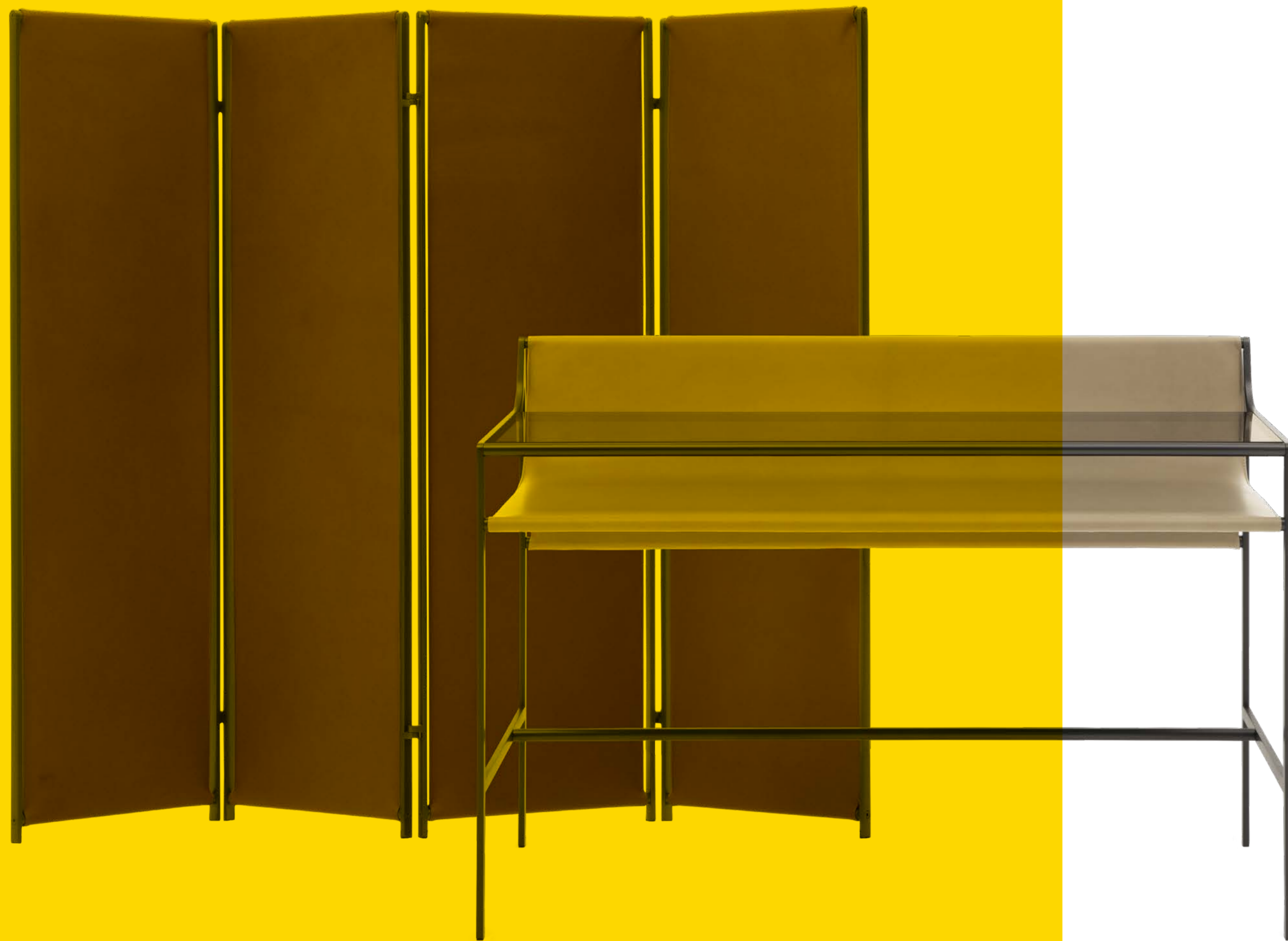
Quiet Lines Complements

Gabriel Tan

"Bedroom is more than ever becoming a place for reflection, quietude, and rituals. Quiet Lines is a range of furniture that embraces a paradox: inviting rest while awakening the senses. Curved, padded surfaces bring tactility and

comfort while dampening sound when objects are placed on them. The silhouette of each piece in the collection is composed of curved and straight lines, forming graphical compositions."





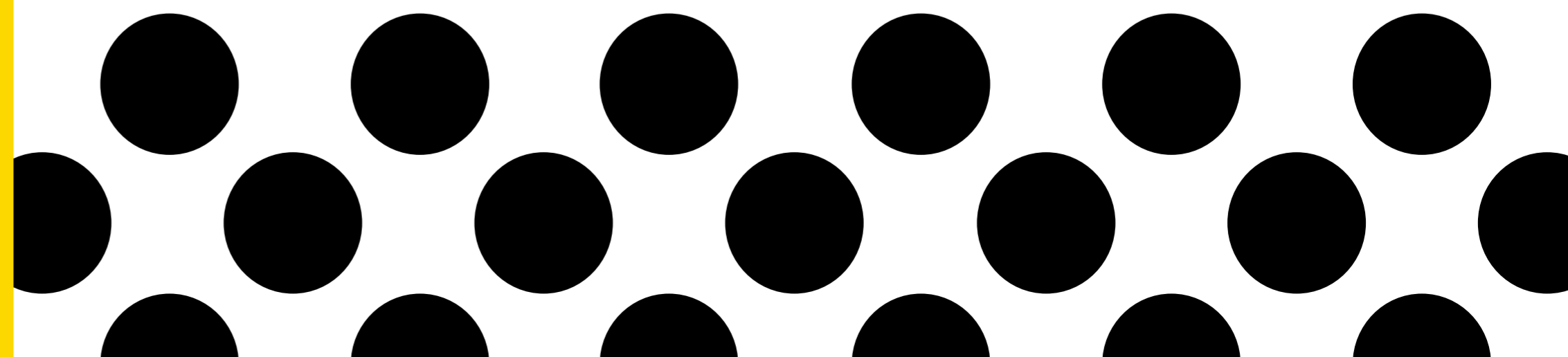
Quiet Lines

Complements

Gabriel Tan

Quiet Lines is a transversal collection consisting of writing desk, bench, bedside table, and screen. The silhouette of each collection piece is made up of curved and straight lines,

with a striking graphic mark. The curved upholstered surfaces, a distinctive feature of the series, form a protective layer on which to sit or display objects.

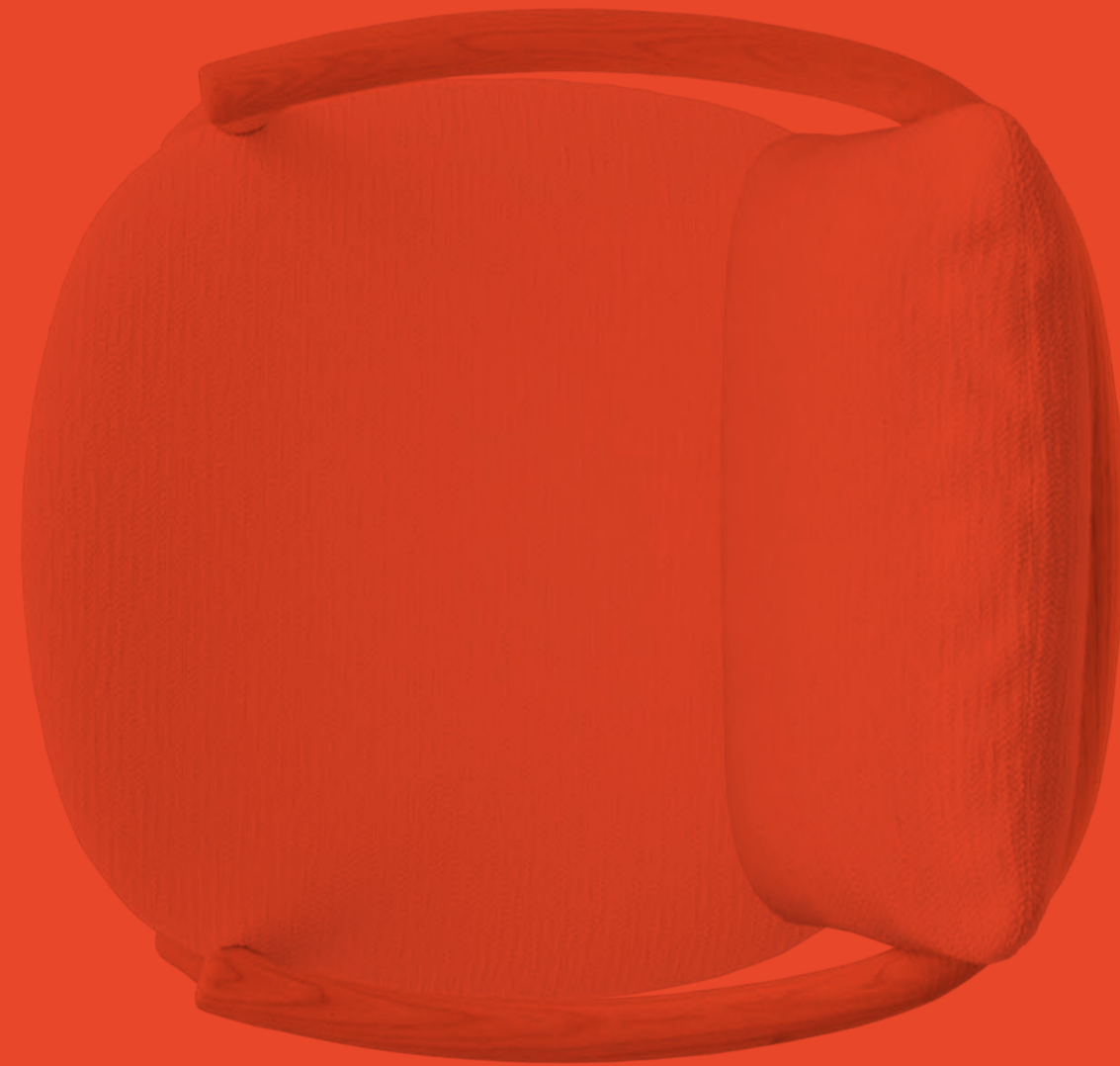


Heri O' Chair

Monica Armani

"Heri O', simple yet sophisticated, is a symbol balancing memory and contemporaneity. I created a chair that immediately welcomes you and makes you acknowledge it. A decisive, tense but also sinuous graphic mark that delineates the structure and accommodates the upholstered seat".

Seemingly elementary, Heri O' combines elegance, essentiality and charm, and nods to the '60s. With a clean design, the chair, light in its forms, is made of a curved and joined wooden frame, a balance between tradition and novelty. The upholstered cushions are made of a foamed metal base covered in fabric.



Allure O' Table Flair O' Couture Chair

Monica Armani

"To create the Flair O' seating collection, I was inspired by cape dresses, which were so striking in the 1960s, and this is well conveyed by my design. A design with a strong sartorial soul, so how could I not think of

a new 'couture' version? From this idea, the new Flair O' Couture chair was born. For her, I created an evening dress, radiant and fascinating, with a design balancing solids and transparencies."



Flair O' Couture chair boasts a backrest completely enveloped by the weaving of polypropylene ribbons and rests on a truncated cone-shaped foot with a lenticular base. To fine-tune it, Monica Armani collaborated with unPIZZO, a design studio based in Cantù. Only two years after its launch, the Allure O' table collection, a heartfelt tribute to glamour reinterpreted in a contemporary guise, has been extended with the addition of new finishes.

Tetrami

Box-Shelf

Naoto Fukasawa

"For some reason, I like horizontal rectangles. Most of these typologies of shelves feature legs, but this one has two vertical partitions that I extended to form legs. I think I've achieved the minimalist shape that everyone has envisioned. I think it's beautiful wherever and however you use it."

A linear graphic character, with a strong functional impact, distinguishes Tetrami, the new collection of free-standing functional containers. The rectangle is the star element, as are the feet that unexpectedly materialise as vertical extensions of the two central partitions. The object is created thanks to the experience of expert cabinetmakers and is composed of extra thin wooden lists. Tetrami is available as an open cabinet or with drawers in light or black brushed ash.





bebitalia.com

B&B
ITALIA