

Borea

DESIGNED BY PIERO LISSONI

Borea is a complete and eclectic collection of outdoor seats and tables designed by Piero Lissoni. The numerous pieces in the collection have in common tubular metal structures with a fluid and seamless design, without joints and interruptions, captivating and even emerging in the detail that extends to the base. The metal bending processes take advantage of techniques typically used in the aeronautical sector and transport them into the world of outdoor furniture bringing life to a collection with an unmistakable style. The collection includes two- and three-seater sofas, an oversized armchair, a low small armchair and a dining chair, all with stackable aluminum structures painted. Comfort is ensured by generous cushions, which are not only soft and relaxing but were also developed to be sustainable. Paddings are in fact made with polyester fiber filling coming from recycled PET plastic bottles enveloping a different densities polyurethane core. 510 1500 ml bottles are needed to create the padding for a Borea three-seater sofa, 390 bottles for the twoseater sofa, 280 for the armchair.

Comes with:
OFW48x48 - 45x45cm optional cushions (x2)

BE243

68 cm

26 3/4"

88 cm

34 5/8"

110 cm

43 1/4"

37 cm

14 5/8"

75 cm

29 1/2"

243 cm

95 5/8"

3-Seater Sofa

(waterproof cover included)

\$13,851

Seat& Back cushion:

Solano 810

Profile:

Blue color

Optional cushions:

Aliseo 102

Frame: 0236B

Anthracite painted

4

5

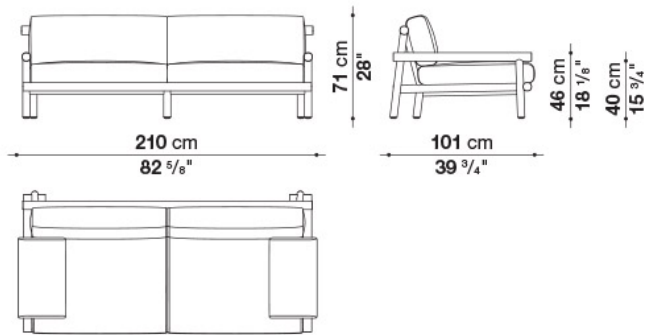
Ayana

DESIGNED BY NAOTO FUKASAWA

Minimalist and innovative, the Ayana collection becomes a new chapter in the story that connects B&B Italia to Naoto Fukasawa. It sees wood as the protagonist, interpreted in an unusual way, with a pleasant oriental touch. If the depths and heights are a clear reference to the south-east Asian tradition, the backrest recalls a Swedish wall bar, an exercise equipment turned into a load-bearing element. Thanks to this solution, the elements of the Ayana collection can be enjoyed and appreciated at 360 degrees, discovering on each side a new elegant interplay of intersections and proportions. Two and three seat sofas and the armchair have armrests at different heights. The armchair armrest is higher to guarantee a more ergonomic seat. The sofa armrest, which is lower, can be combined with a cushion that is easy to be fastened and removed, and helps to lie down more comfortably if necessary. The upholstery of this collection stands out for the individual cushions, all covered with waterproof fabrics.

Ayana is a project with a green soul. The teak used to make the structures is FSC certified (Forest Stewardship Council) and all the materials that make up the various elements of the series, at the end of the product's life cycle, can be separated and disposed of with respect for the environment.

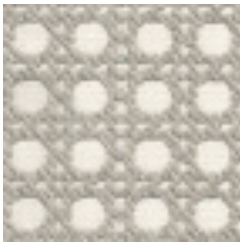
AY210



Sofa (waterproof cover included)
 "Limited Quantities"
 \$10,362



0456T
 natural teakwood



Linaria 207



Canasta'13

DESIGNED BY PATRICIA URQIOLA

Canasta '13 is given a tortora melange makeover with the new polyethylene fibre, creating an interlacing that evokes the Crinoline collection.

Comes with:
three 25 5/8" x 25 5/8" cushions
two 18 7/8" x 18 7/8" cushions
one 21 5/8" x 15 3/4" cushion



Seat cushion:
Sirocco 253



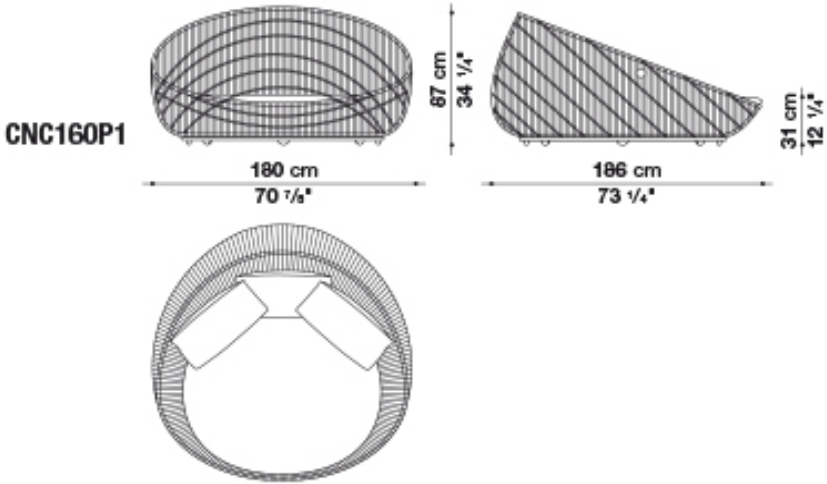
Large & medium
back cushions:
Lipari 407



Interlacing:
Tortora



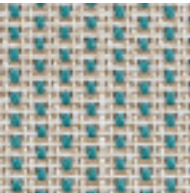
Small cushions:
Lipari 911



Round sofa
(waterproof cover included)
\$11,408



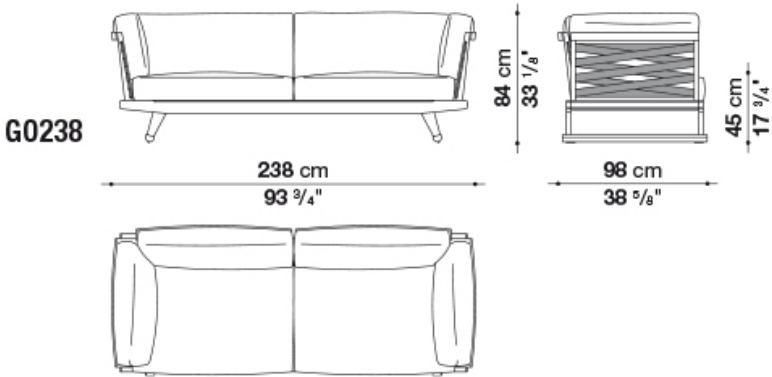
Gio, designed by Antonio Citterio, is the new series with a contemporary classic accent dedicated to living in the open air. A complete range of sofas, end units, chaiselongue, sunbeds, armchairs, chairs, tables and complements which have been developed from solid teak structures with a special antique grey finish, which gives the wood a particular lived-in aspect and silver-grey reflective quality. Through the quick ship program the linear sofa 238 cm and the rectangular small table 120 cm are available.



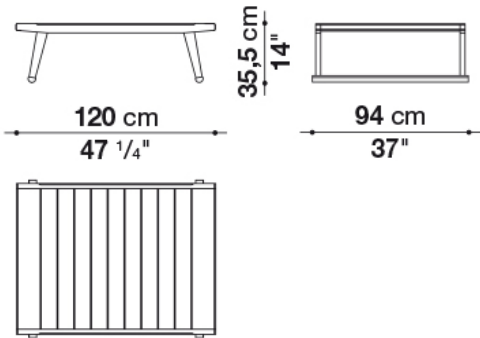
Seat cushion:
Elisir 420



Frame: 0492T
Antique
Teakwood



TG012



Sofa (waterproof cover included)
"Limited quantities"
\$13,783



Coffee table
(waterproof cover included)
"Limited quantities"
\$2,752



Hybrid

DESIGNED BY ANTONIO CITTERIO

After the great success of Ribes, Antonio Citterio developed some design ideas behind it and created Hybrid, an innovative new system of modular seating elements that it is so versatile it can be arranged into an almost infinite number of combinations. The key role of the textile dimension stands out immediately, with upholsteries that cover completely the generous padding, the absolute protagonist. These are typical elements of indoor furnishings, which find with Hybrid an outdoor interpretation. Hence the name of the collection, which is proposed as a real link between the inside and the outside of the house.

Hybrid represents in fact the perfect furnishing element for climates and spaces that are defined by a continuous blend of inside and outside environments, with rooms that open to an en-plein-air dimension, and for living spaces integrated into terraces and gardens.

The combination of opposites happens not only visually, but also through the sense of touch. Hybrid guarantees in fact the typical comfort of traditional upholstered furniture for interiors, thanks to a new type of mattress seat conceived for outdoor furnishing.

The cushions are actually made with paddings with different densities, carefully designed to pleasantly accommodate the new compositions.

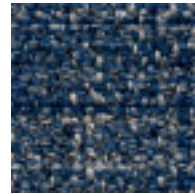
body and support it at the same time, without sinking. The supporting structures are almost invisible, and the seat seems to float a few centimeters above the floor. The solid base is formed by a frame in extruded aluminum painted in the colours sage, clay and anthracite, and is completed by a platform with fiberglass slats. The backrest conceals an aluminum structure, covered with soft polyurethane, which is in turn covered with a padded sheath, completed with a cover in waterproof fabric.

The platform is available in eight sizes and two depths, while the armrest and backrest come in two heights. To guarantee further comfort to the deeper seat, the low backrest can be raised with an additional headrest cushion. Additional cushions in various sizes enrich the range, offering countless design and chromatic solutions. The Hybrid collection also includes a series of new outdoor fabrics made with mélange polypropylene yarn in five colour variants that are accented by refined trims. Choices that confirm a decisive and elegant presence for interiors and outdoor spaces.

All the objects in the Hybrid collection can be dismantled completely. At the end of the life cycle, each individual element can be separated and disposed of following the path best suited to each material.



Sofa:
Saturno 258



Sofa:
Saturno 800



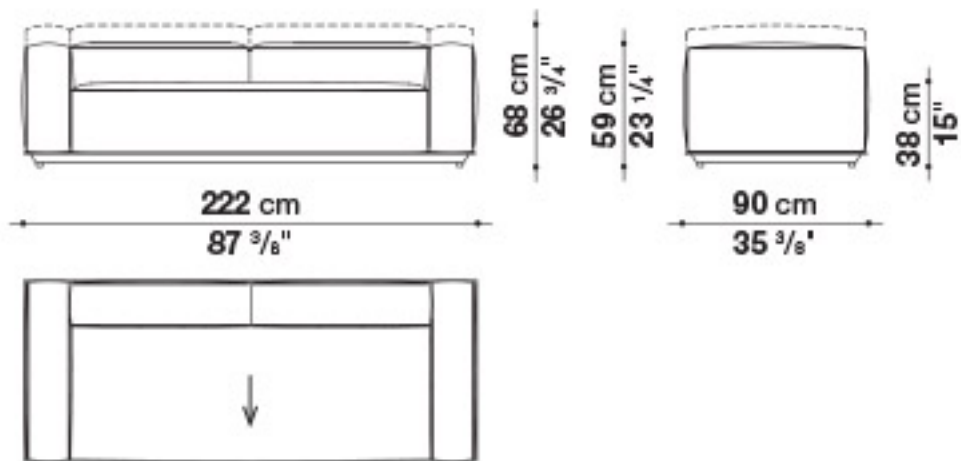
Profile:
0082N natural



Frame: 0236B
anthracite painted



9HY222



Sofa
(waterproof cover included)
Grey Saturno 258
\$12,796



Sofa
(waterproof cover included)
Blue Saturno 800
\$12,796

Ray Outdoor Fabric

DESIGNED BY ANTONIO CITTERIO

Ray Outdoor Fabric features an interlacing ribbon pattern, created using polypropylene fibre that are resistant to UV rays and weathering. The range of colours, particularly suitable for outdoor environments, varies from turquoise to blue and from acid green to tortora through bright Bordeaux.

The collection consists of sofas available in two depths as well as modular elements such as terminal elements or chaise longue and armchairs. Ray fabric left/right sectional sofas with interlacing are available through this program.



Back & Seat:
Silea 280



Optional cushions
48x48: Loreo 100



Optional cushions
55x40: Silea100

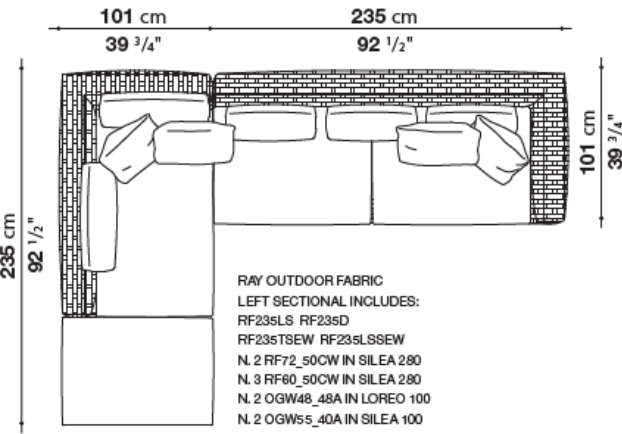


0428T
Tortora Interlacing

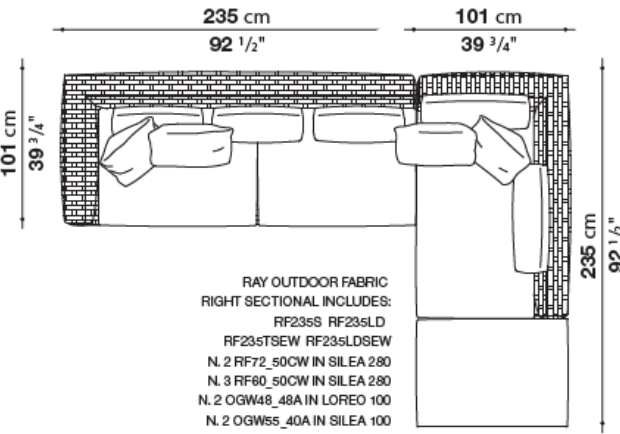


Frame: 0236B
athracite painted

Left Sectional: RF235LS + RF235D



Right Sectional: RF235S + RF235LD



Sofa
(waterproof cover included)
\$24,477

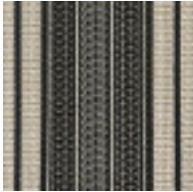
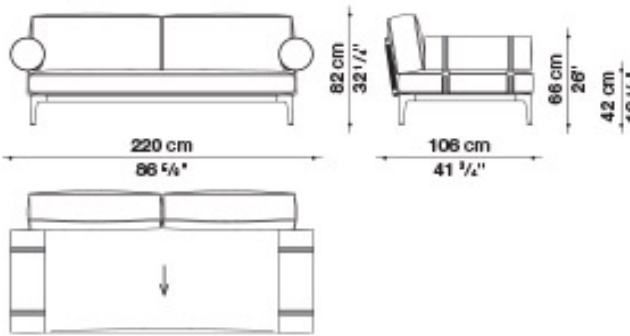
Ribes

DESIGNED BY ANTONIO CITTERIO

Ribes is the new modular seating system designed by Antonio Citterio with a focus on versatility, customisation, colour and research on materials.

Ribes Linear, comes with:
2 optional cushions (pillow style) RB48_48

RBR220



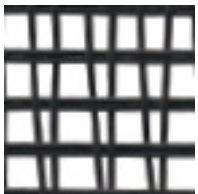
Back cushion:
Elisir 110



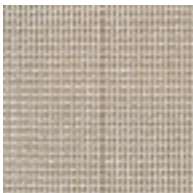
Frame:
0236B
athracite
painted



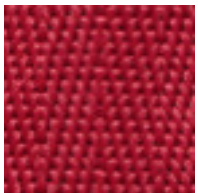
Seat cushion:
Elisir 115



Interlacing:
0132N
anthracite
polypropylene



Throw pillows:
Elisir 207



Profile:
0075R
red color



Roller:
Elisir 120



Straight Sofa
(waterproof cover included)
"Limited quantities"
\$12,172




Ribes


DESIGNED BY ANTONIO CITTERIO

Ribes is the new modular seating system designed by Antonio Citterio with a focus on versatility, customisation, colour and research on materials.


Ribes sectional, comes with:
 x2 optional cushions (pillow style) RB60_60
 x2 optional cushions (pillow style) RB48_48



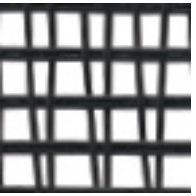
Back & seat cushion:
Elisir 115



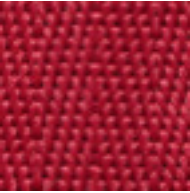
Frame:
0236B
athracite painted



Throw pillows:
Elisir 207

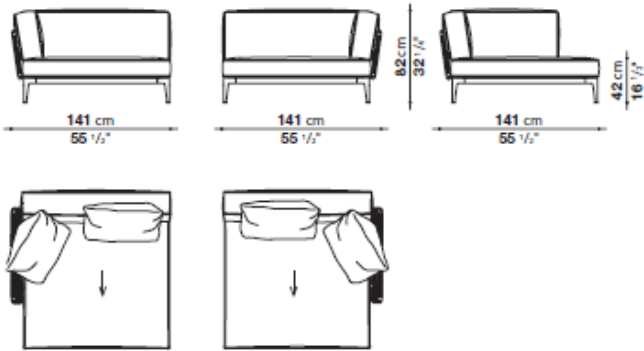


Interlacing:
0132N
anthracite polypropylene

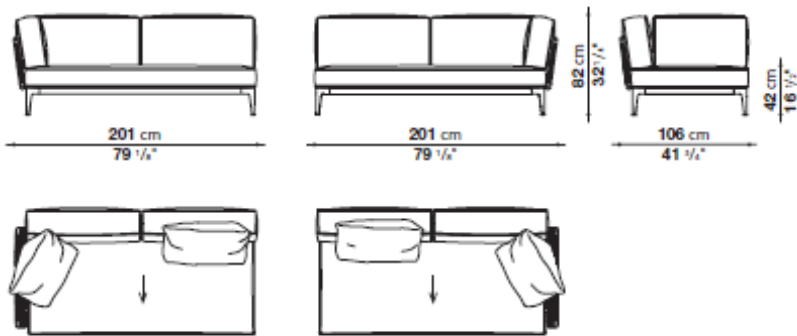


Profile:
0075R
red color

Ribes Sectional
RB141LB_3



RB201T_3



Sectional Sofa
(waterproof cover included)
 "Limited quantities"
 \$20,515

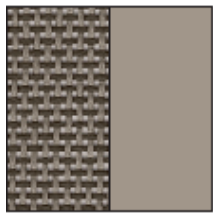


Mirto Outdoor Chaise Lounge

DESIGNED BY ANTONIO CITTERIO

A classic is born. Different types of seating: armchairs, chairs and a chaise longue are included in the collection. The folding armchair revisits the classic shape of a movie director's chair, with special details. The mesh and metal parts are finished in two colours, white and tortora, creating two colorway options in a single colour. The table and small table have the same frame and top in painted aluminium and are available in select colors. The collection expresses Antonio Citterio's stable elegance.

"Set of small mattress, headrest cushion and cover is also available separately".



Stige tortora



Elide 100

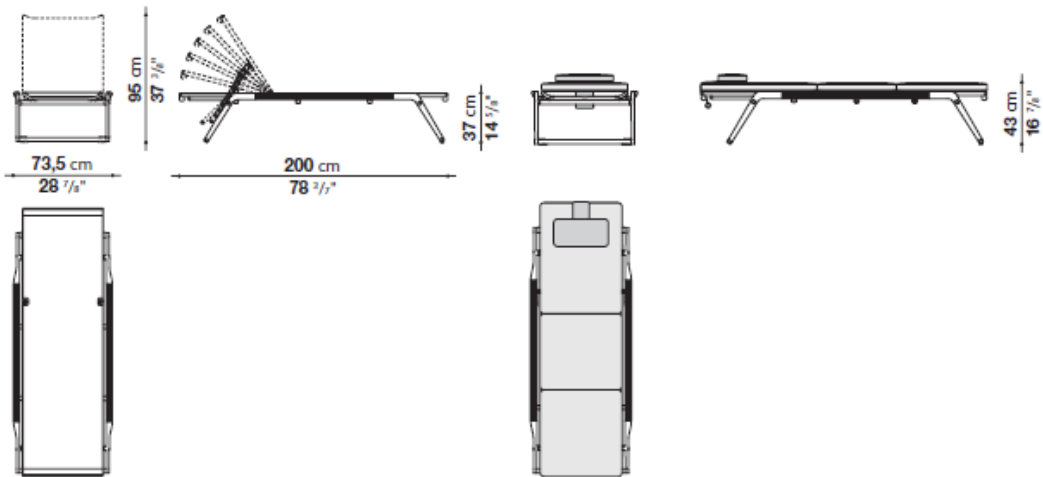


Stige natural white



Bali 100

MI200CL



Chaise Lounge
(waterproof cover included)
"Limited Quantities" \$4,827

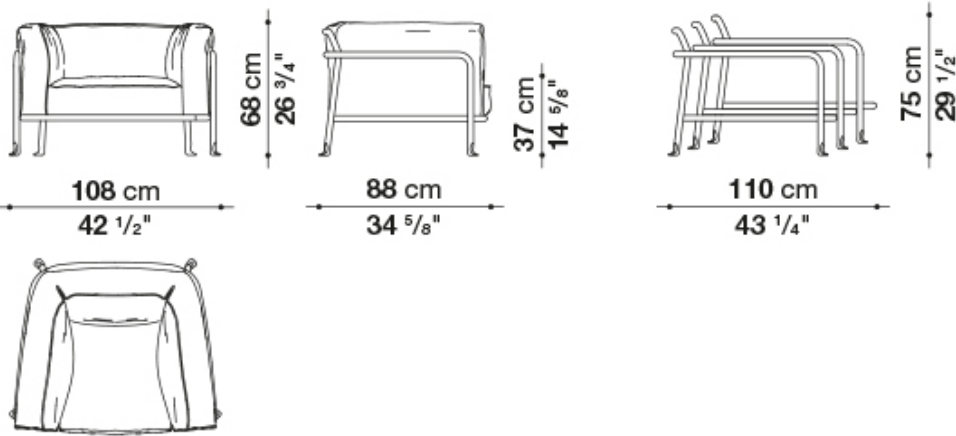


Borea

DESIGNED BY PIERO LISSONI

Borea is a complete and eclectic collection of outdoor seats and tables designed by Piero Lissoni. The numerous pieces in the collection have in common tubular metal structures with a fluid and seamless design, without joints and interruptions, captivating and even emerging in the detail that extends to the base. The metal bending processes take advantage of techniques typically used in the aeronautical sector and transport them into the world of outdoor furniture bringing life to a collection with an unmistakable style. The collection includes two- and three-seater sofas, an oversized armchair, a low small armchair and a dining chair, all with stackable aluminum structures painted. Comfort is ensured by generous cushions, which are not only soft and relaxing but were also developed to be sustainable. Paddings are in fact made with polyester fiber filling coming from recycled PET plastic bottles enveloping a different densities polyurethane core. 510 1500 ml bottles are needed to create the padding for a Borea three-seater sofa, 390 bottles for the twoseater sofa, 280 for the armchair.

BE108



Armchair
(waterproof cover included)
\$6,308



Seat& Back
cushion:
Solano 815



Frame: 0236B
Anthracite painted



Profile:
Blue color

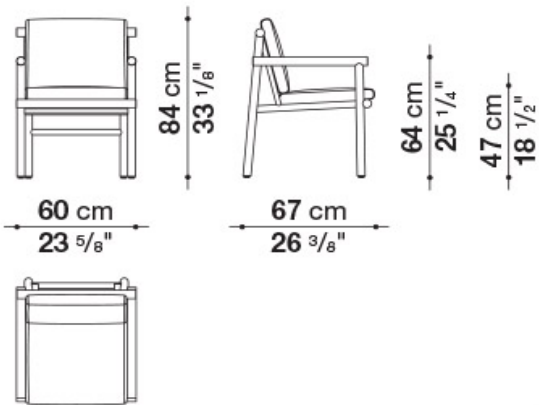


Ayana

DESIGNED BY NAOTO FUKASAWA

Ayana’s warm minimalism is completed with a chair, a dining table and a low table. The dining chair recalls the stylistic features of the other seats, for a perfect family feeling, with the structure in natural teak wood and two generously padded cushions covered in fabric. Ayana is a project with a green soul. The teak used to make the structures is FSC certified (Forest Stewardship Council) and all the materials that make up the various elements of the series, at the end of the product’s life cycle, can be separated and disposed of with respect for the environment.

AY58S



Chair
(waterproof cover included)
 "Limited Quantities"
 \$2,533



0456T
natural teakwood



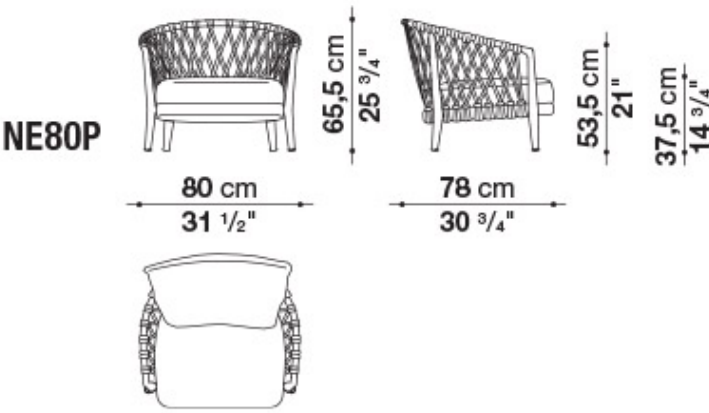
Liri 830



Erica '19

DESIGNED BY ANTONIO CITTERIO

The Erica collection of sofas, armchairs and small chairs that was so successfully launched in 2017 has been enhanced by new sofas, still based on the same characteristic curved backrest and interlacing as before but offering a deeper seat and lived-in appearance. The sofas come in three extra-comfortable sizes - the 170 cm and 216 cm styles with a 96 cm deep seat and the 153 cm version with a 140 cm seat - and the cushions have a different type of filling giving an even softer and more natural look and making them even more inviting. The unusual colour juxtaposition of frame and interlacing in anthracite, tortora or a frame in sage with natural-coloured interlacing can be complemented by a vast range of cushion covers, in an array of tones and designs, all co-ordinating with each other. There is also a chair with armrests with an brand new interlaced backrest.



Armchair
(waterproof cover included)
"Limited Quantities"
\$4,033



Frame:
0236B
athracite painted



polypropylene/
anthracite frame



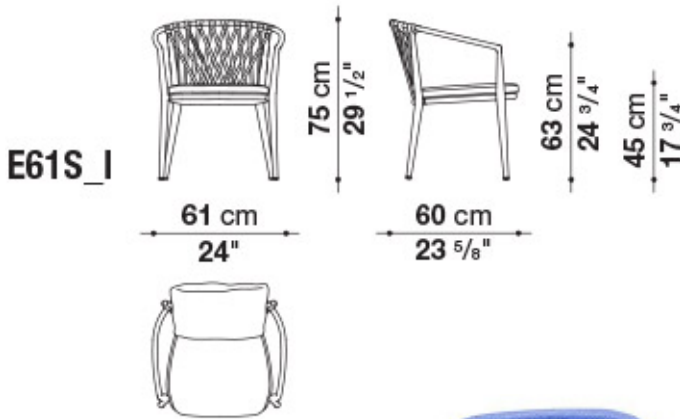
Seat & Back cushion:
Agate 153



Erica

DESIGNED BY ANTONIO CITTERIO

The Erica collection of sofas, armchairs and small chairs that was so successfully launched in 2017 has been enhanced by new sofas, still based on the same characteristic curved backrest and interlacing as before but offering a deeper seat and lived-in appearance. The sofas come in three extra-comfortable sizes - the 170 cm and 216 cm styles with a 96 cm deep seat and the 153 cm version with a 140 cm seat - and the cushions have a different type of filling giving an even softer and more natural look and making them even more inviting. The unusual colour juxtaposition of frame and interlacing in anthracite, tortora or a frame in sage with natural-coloured interlacing can be complemented by a vast range of cushion covers, in an array of tones and designs, all co-ordinating with each other. There is also a chair with armrests with an brand new interlaced backrest.



Dining chair
(waterproof cover included)
\$2,296



Frame:
0236B
athracite painted



**polypropylene/
anthracite frame**



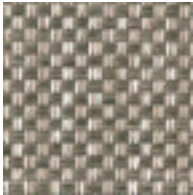
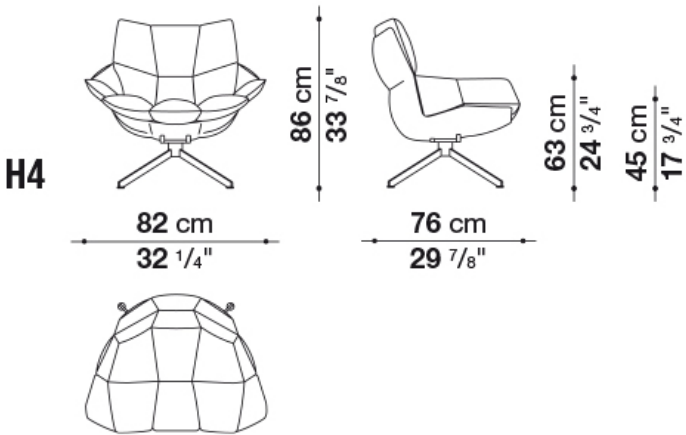
Seat & Back cushion:
Lesia 877



Husk Outdoor

DESIGNED BY PATRICIA URQUIOLA

Husk Outdoor chairs feature a hard shell made of Hirek® and a soft cushion. The shell, along fixed seat support, is available in white.



Seat & Back cushion:
Agate 287



Back: white Hirek®
plastic material



Legs: 09010
white painted



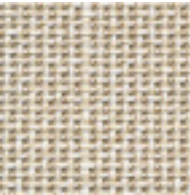
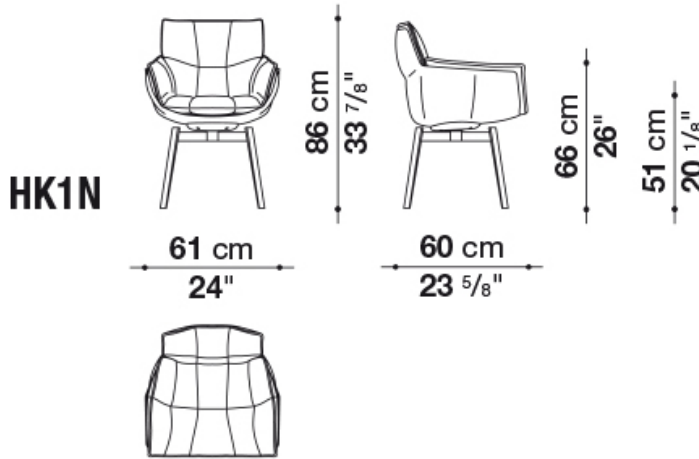
Armchair
(waterproof cover included)
"Limited quantities"
\$3,598



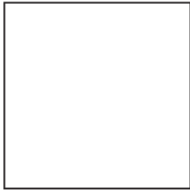
Husk Outdoor

DESIGNED BY PATRICIA URQUIOLA

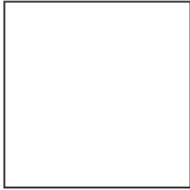
Husk Outdoor chairs feature a hard shell made of Hirek® and a soft cushion. The shell, along fixed seat support, is available in white.



Seat & Back cushion:
Elisir 207



Back: white Hirek®



Legs: 09010
white painted



Dining Chair
(waterproof cover included)
\$1,953

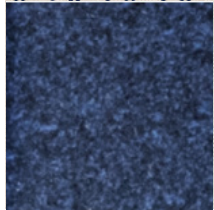
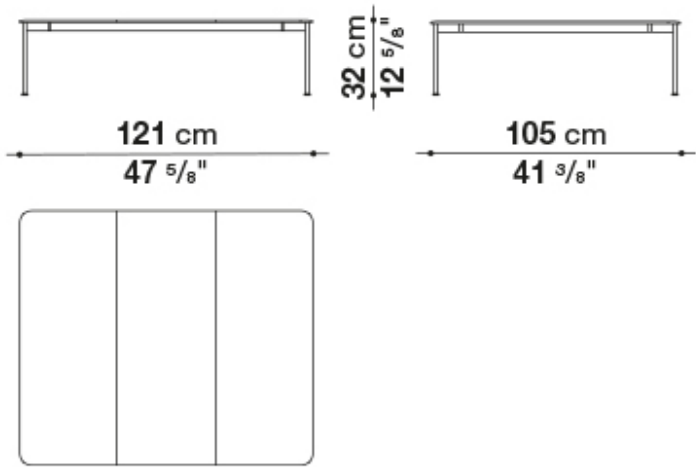


Borea

DESIGNED BY PIERO LISSONI

Borea is a complete and eclectic collection of outdoor seats and tables designed by Piero Lissoni. The numerous pieces in the collection have in common tubular metal structures with a fluid and seamless design, without joints and interruptions, captivating and even emerging in the detail that extends to the base. The metal bending processes take advantage of techniques typically used in the aeronautical sector and transport them into the world of outdoor furniture bringing life to a collection with an unmistakable style. The collection includes two- and three-seater sofas, an oversized armchair, a low small armchair and a dining chair, all with stackable aluminum structures painted. Comfort is ensured by generous cushions, which are not only soft and relaxing but were also developed to be sustainable. Paddings are in fact made with polyester fiber filling coming from recycled PET plastic bottles enveloping a different densities polyurethane core. 510 1500 ml bottles are needed to create the padding for a Borea three-seater sofa, 390 bottles for the two-seater sofa, 280 for the armchair.

TBE121



Top: 0097B
Ocean blue
enamelled lava stone



Frame: 0236B
Anthracite painted

Coffee table
(waterproof cover included)
\$6,592

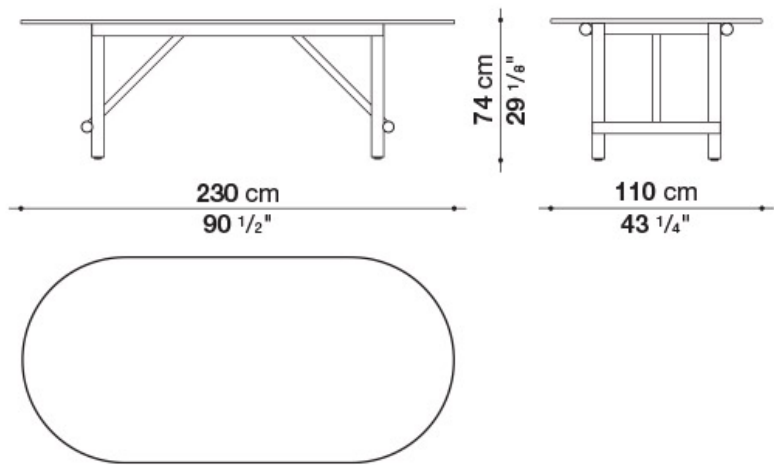


Ayana

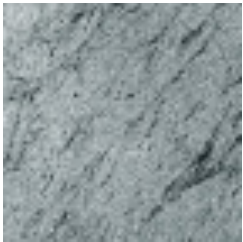
DESIGNED BY NAOTO FUKASAWA

The table stands out for its oval top in serpentine, a typical stone of the Alps. The supporting structure in natural teak appears light but is extremely robust, able to resist weather and support the heavy top. Ayana is a project with a green soul. The teak used to make the structures is FSC certified (Forest Stewardship Council) and all the materials that make up the various elements of the series, at the end of the product's life cycle, can be separated and disposed of with respect for the environment.

TAY230



0456T
natural teakwood



0408S
Serpentine stone

Table
(waterproof cover included)
"Limited Quantities"
\$7,263



Fiore

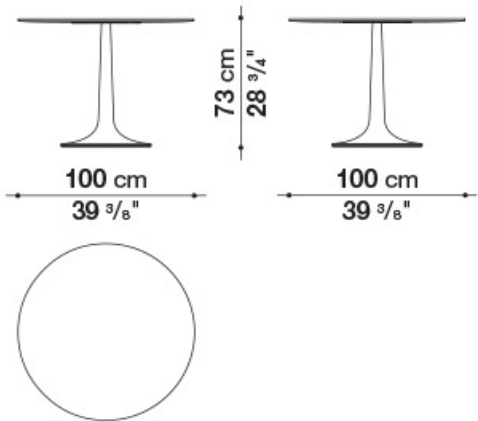
DESIGNED BY NAOTO FUKASAWA

Fiore is a collection of dining tables with small sizes and small tables that stand out for their perfect formal balance and for the striking texture of their cement finish, available in white cement finish through this program.



0159B
White Cement

TF100RA



TF100RB

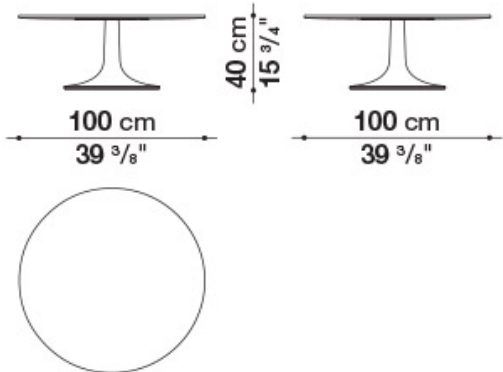


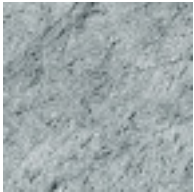
Table
Round dining - White cement
\$ 2,717
Round low - White cement
\$ 2,615



Ginepro

DESIGNED BY ANTONIO CITTERIO

The Ginepro table is made with an anthracite painted aluminum structure and a Serpentine stone top extremely durable and precious as the linear and timeless style. With its two shapes (round and rectangular with rounded corners) and four dimensions, it lends itself to be placed in different outdoor environments: terraces, verandas, patios and gardens.

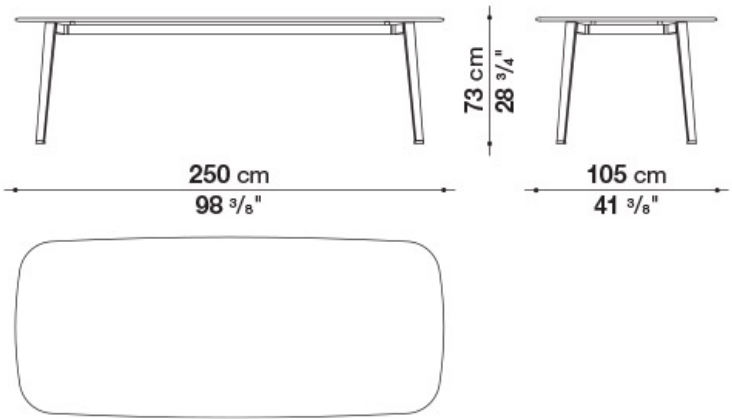


Top: 0408S
Serpentine stone

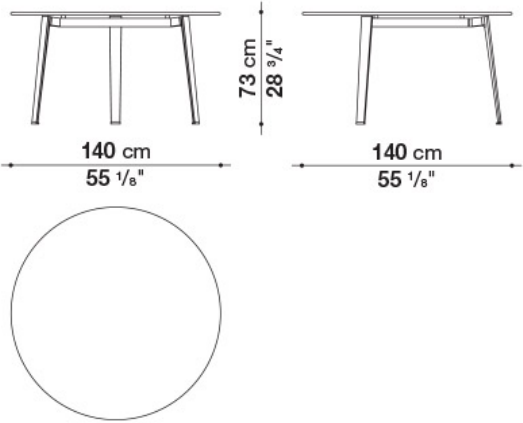


Frame: 0236B
anthracite painted

TGS250



TGS140R



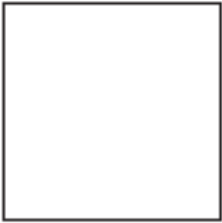
Dining Table
(waterproof cover included)
Round TGS14R - \$ 5,036
Rectangular TGS250 - \$ 7,175



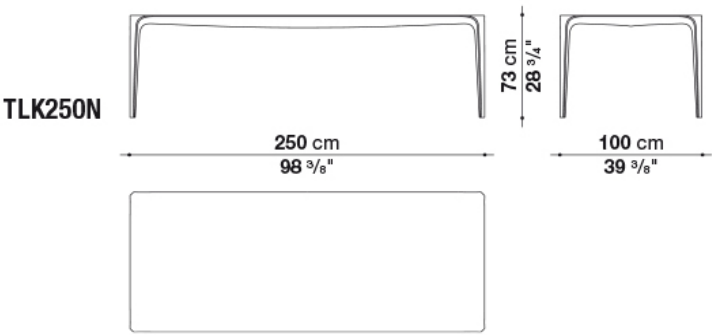
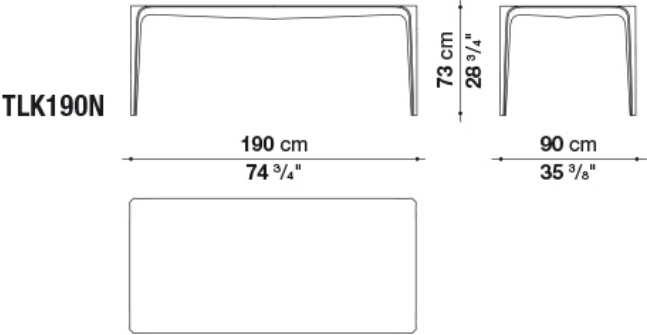
Link Outdoor

DESIGNED BY JAKOB WAGNER

A single piece, moulded, continuous, with no joints. The Link's distinguishing feature is its "soft" texture and the sensuality of its shape and material. Made of Cristalplant Outdoor®, the table is cast in a single mould and does not require connecting elements. The Link comes in a rectangular model which is produced only in a white colour.



0101G
White Cristalplant Outdoor®



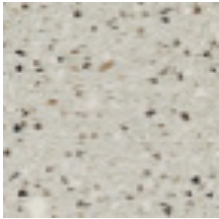
Dining Table
(waterproof cover included)
TLK190N - \$ 9,507
TLK250N - \$ 12,626



Tobi-Ishi Outdoor

DESIGNED BY BARBER & OSGERBY

After the debut in the home collection, Edward Barber & Jay Osgerby design Tobi-Ishi Outdoor, the outdoor version of the iconic round dining table and of the small table clearly inspired by Zen. The overhang of the table and the vertical trapezoidal bases set at right angles generate an essential sculptural figure that appears to change shape depending on the point of observation. Exclusively made of cement, Tobi-Ishi Outdoor comes in two colour variants, grey and anthracite.



0237G
Grey cement



Table/ Small table
Dining OT162 - \$ 9,713
Small table OT146 - \$ 5,611



Awa Outdoor

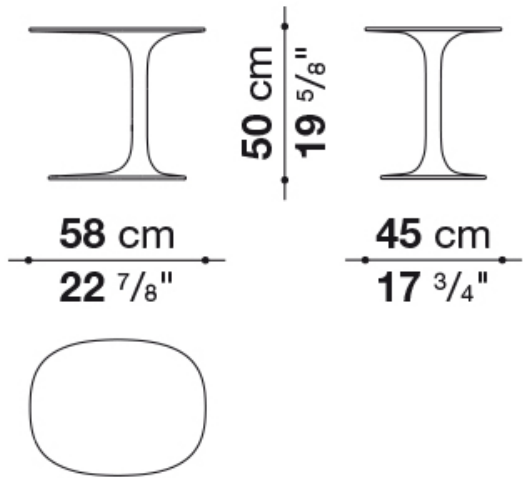
DESIGNED BY NAOTO FUKASAWA

The Awa is an elegantly asymmetrical table given outdoor functionality by a new type of Cristalplant Outdoor® material.



0101G
White Cristalplant Outdoor®

TA1



Small table
\$ 1,660



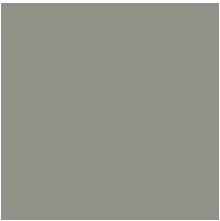
Colosseo Outdoor

DESIGNED BY NAOTO FUKASAWA

In 2020 Colosseo debuts outdoor in the new porcelain stoneware version in sage and clay colors. A furnishing element with various functions depending on the occasion and need (coffee table and pouf). Colosseo takes its name from the designer's inspiration. Naoto Fukasawa has in fact arrived at the desired shape thinking of a solid in the shape of an upside-down truncated cone, creating an assonance with the structure of the famous Roman arena.

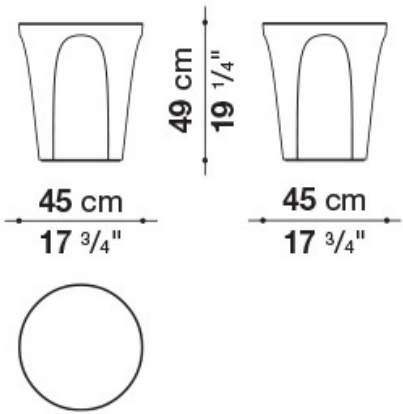


0302A
Clay Stoneware



0416S
Sage Stoneware

OCL45T



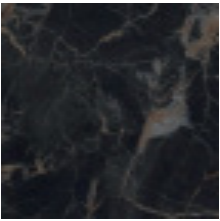
Small table
"Limited quantities"
0416S sage stoneware - \$1,024
0302S clay stoneware - \$1,024



Fat-fat Outdoor

DESIGNED BY PATRICIA URQUIOLA

The concept of a tray helped create three small outdoor tables with steel frames that give them a lightweight look. These small tables are entirely painted in the finishes anthracite, tortora, sage and clay or with tops in porcelain stoneware.

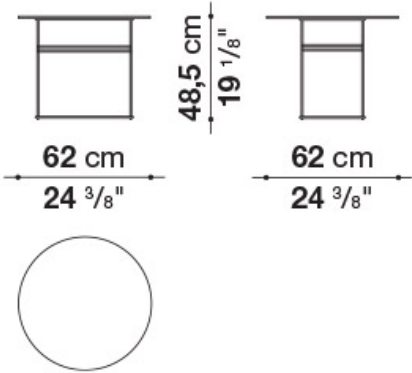


Top: 0355N
anthracite stone
porcelain stoneware

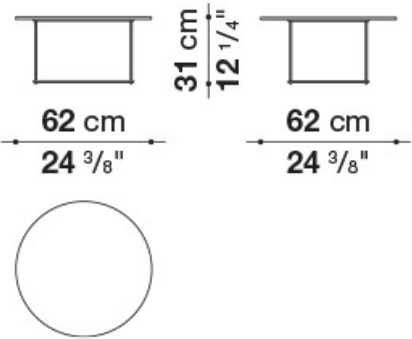


Frame: 0236B
anthracite painted

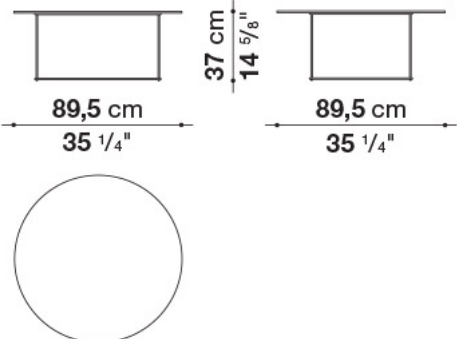
OTF62AG



OTF62G



OTF92G



Small table

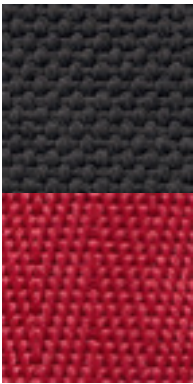
OTF62G - \$ 1,612
OTF62AG - \$ 2,014
OTF92G - \$ 2,175



Frank Outdoor

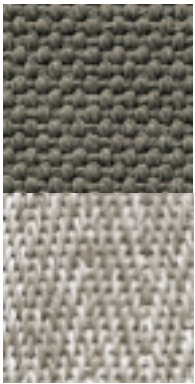
DESIGNED BY ANTONIO CITTERIO

This outdoor ottomans have contrasting profiles matched to colourful outdoor fabrics to provide a touch of colour to your outdoor furnishings.



Lesia 255

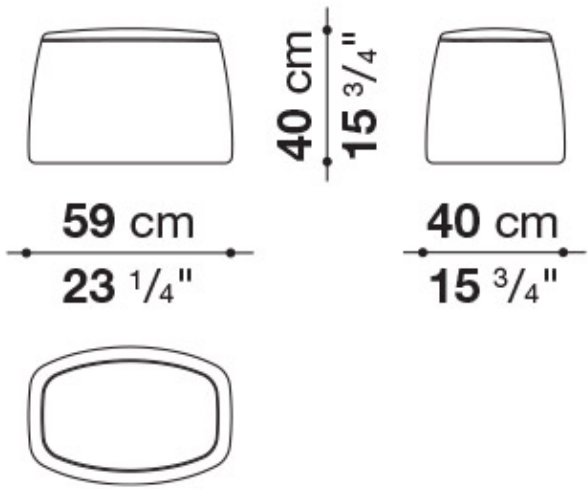
Profile:
0075R red



Lesia 280

Profile:
0082N natural

OF58P



Pouf
(waterproof cover included)
"Limited quantities"
Red profile, Lesia 255 - \$1,550
Natural profile, Lesia 280 - \$1,550



Hospes

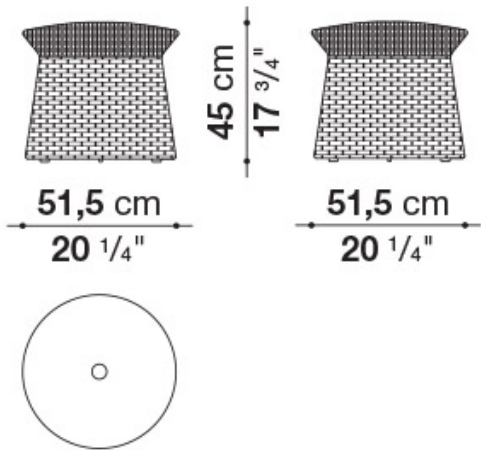
DESIGNED BY B&B ITALIA CR&S - 2020

The B&B Italia's Research & Development Centre has developed Hospes, an extremely versatile ottoman that is at its best in any room. A dynamic complement that can be used in different ways and fits perfectly with different product families. Made in two sizes and three colors - overseas blue, stone, an-thracite - it is based on a robust aluminum frame covered with an interlacing of waterproof ropes. On top, the interlacing is held up by webbing that provides support and comfort.

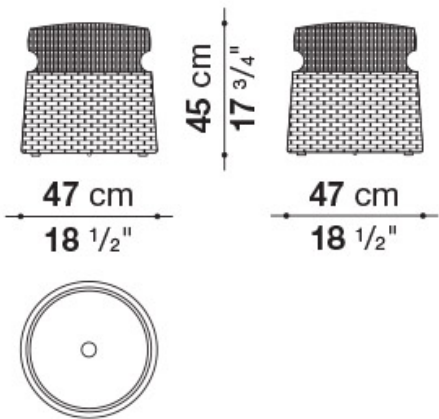


0835B
overseas blu
polypropylene

HE1



HE2



Pouf

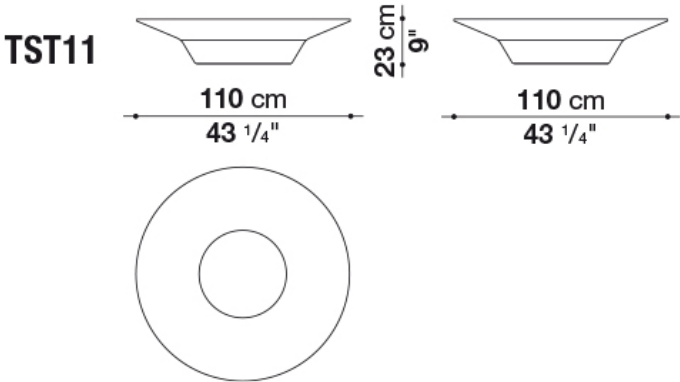
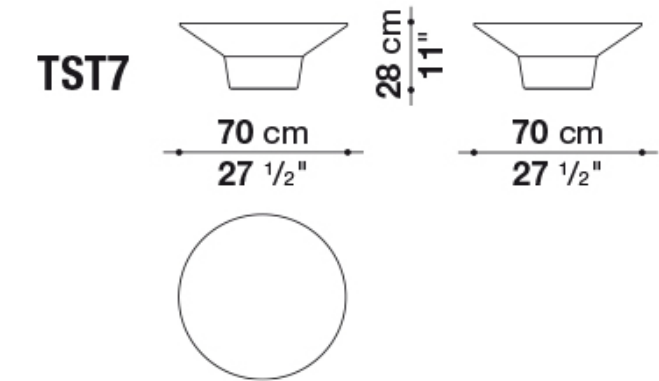
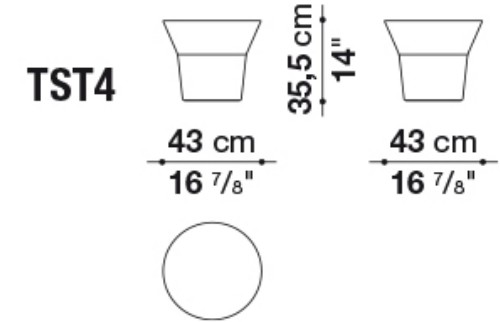
"Limited quantities"
HE1 - \$1,489
HE2 - \$1,489



Springtime

DESIGNED BY JEAN-MARIE MASSAUD

These decorative side tables, designed by Jean-Marie Massaud, are made in white Cristalplant Outdoor®.



- Service elements
- TST7 - \$1,817
 - TST4 - \$1,491
 - TST11 - \$4,091

0101G

White Cristalplant Outdoor®



Tramae

DESIGNED BY unPIZZO

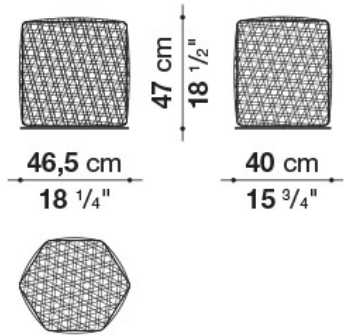
unPIZZO, a design studio and textile handicrafts laboratory specialized in interlacing for furnishing, continues its research on the revival of ancient craft techniques with Tramae, a brand new ottoman for B&B Italia.

Available in three dimensions, this small object full of character stands out for its hexagonal shape, which is rounded until the edges are no longer visible.

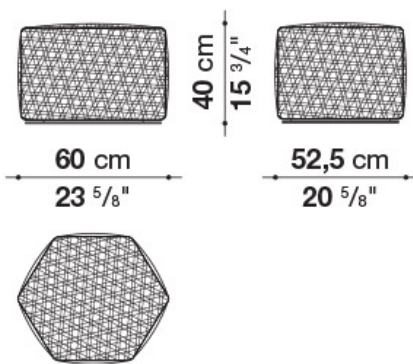
The surface shows a singular dynamic mix of materials and colors that come to life through an exclusive weave that reinterprets the tradition of wicker basket making in a contemporary key.

At the end of its lifespan, Tramae can be dismantled completely so that each component can be separated and disposed of in the best way for each material.

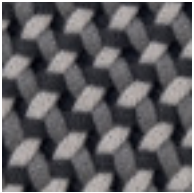
TRM47P



TRM60P



0843B
night blue
polypropylene



0296G
dark grey
polypropylene

Ottomans
(waterproof cover included)
TRM47P - \$1,688
TRM60P - \$2,176



URBANSPEACE INTERIORS
801 W. 5th Street, Suite 100
Austin, TX 78703
T 512 476 0014
www.urbanspaceinteriors.com
shop@urbanspaceinteriors.com

VOLTAGE
B&B Italia & Maxalto Shop-in-Shop
3209 Madison Road
Cincinnati, OH 45209
T 513 871 5483
info@voltagefurniture.com
www.voltagefurnniture.com

WALTERS WICKER, INC
979 Third Avenue, Suite 538
New York, NY 10022
T (212) 758-0472
info@waltersnyc.com
www.waltersnyc.com

WEISSHOUSE
324 S. Highland Ave
Pittsburgh, PA 15206
T 412 441 8888
info@weisshouse.com
www.weisshouse.com

DEALERS CANADA
INFORM INTERIORS
B&B Italia & Maxalto Shop-in-Shop
97 Water Street
Vancouver, BC V6B 1A 1
T 604 682 3868
info@informinteriors.com
www.informinteriors.com

KIOSK
B&B Italia & Maxalto Shop-in-Shop '
288 King Street East
Toronto, ON M5A 1 K4
T 416 539 9665
contact@kioskdesign.ca
www.kioskdesign.ca

LE BELLE ARTI
16844 111 Avenue NW
Edmonton, AB T5M 4C9
T 780 454 0677
info@lebellearti.com
www.lebellearti.com

LE BELLE ARTI
B&B Italia & Maxalto Shop-in-Shop
1435 9 Avenue SE
Calgary, AB T2G OT 4
T 403 234 9700
calgary@lebellearti.com
www.lebellearti.com

MOBILIER AVANT-SCENE
620 Rue St-Paul
Montreal, QUE H3C 1 L9
T 514 281 6782
contact@avant-scene.com
www.avant-scene.com